

XYLOCLEAF

5

XYLOCLEAF

XYLOHOUSE, The Business Design Centre - Suite 304, Islington Green, 52 Upper Street, Islington, London N1 0QH
T +44(0) 20 8368 8122 F +44(0) 20 8368 8127 info@xyloleaf.com www.xyloleaf.com



5

Index

XyloCleaf products	001-004
creation of furniture	005-034
doors	035-048
catalogue of XYLOCLEAF surfaces	049-070
XYLOCLEAF edges	071-074
technical specifications	075-098
point of sales material	099-100
contact details	101-102



XyloCleaf products



XyloCleaf products

XyloCleaf are decorative surfaces that are made in the form of panels, laminate sheets and ABS edge band. They can be used to manufacture any kind of interior furniture or furnishings. P&L (UK) Ltd is the official and exclusive distributor of the XyloCleaf products in the United Kingdom and Ireland. The XyloCleaf products are manufactured by the Italian company Cleaf.



creation of furniture



chair



table





bench

wash basin counter





kitchen counter





wardrobe





dressing unit



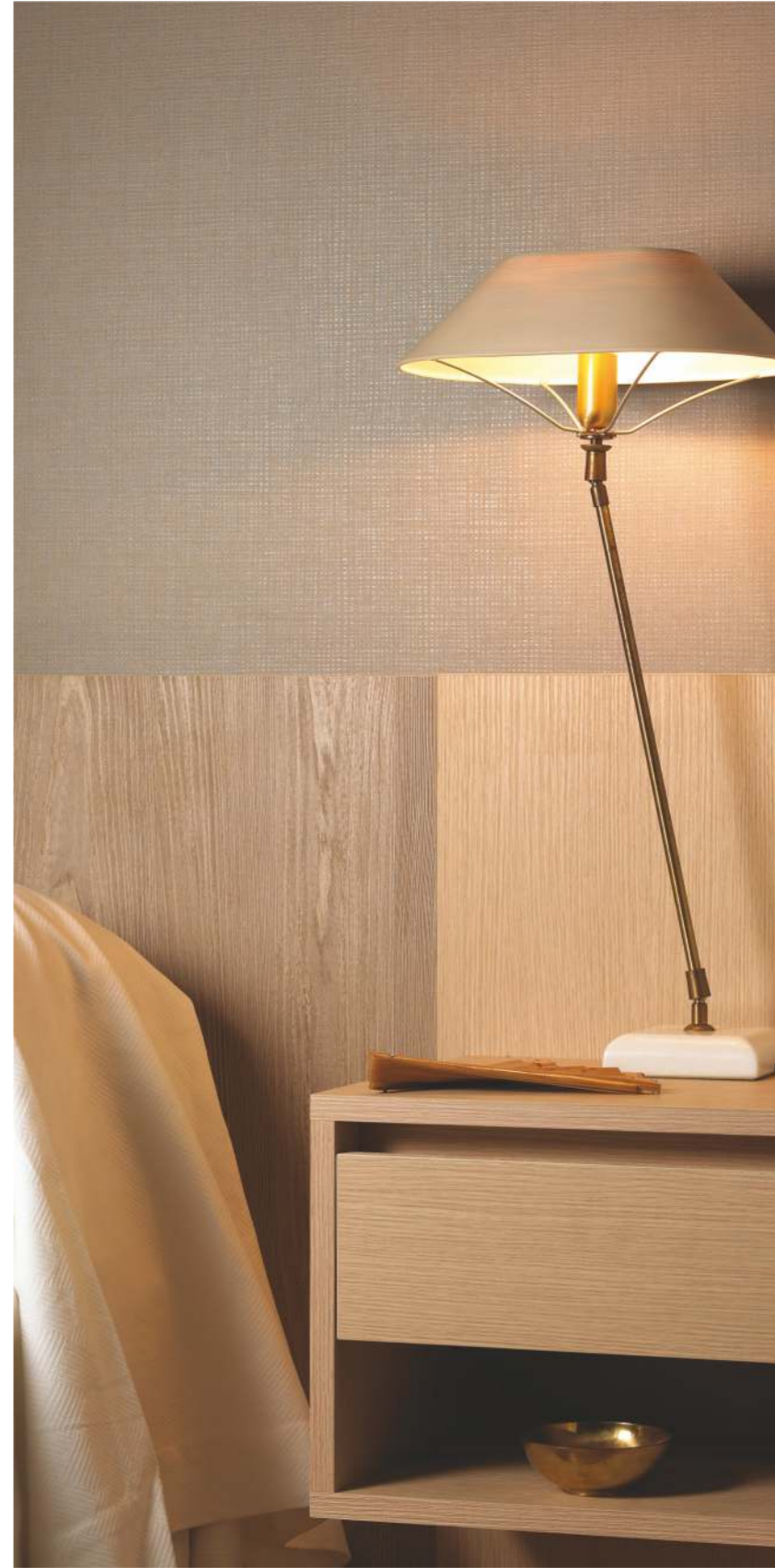
application in restaurants





shop fitting









office partition with door





boxes



doors



The world of doors

Doors increasingly play a strong visual and practical role in interior decoration; they also act as partitioning between designated areas.

XYLOCLEAF possesses the sector of know-how that is required in the furniture industry (materials, patterns, colour combinations, finishes), as well as special technological solutions to supply a door system, complete in all elements and functional and stylistic details.

The encounter with the world of doors triggered an extraordinary synergy, in which XYLOCLEAF contributed new forms and expressions to the aesthetic value of the door, increasingly orientated towards design in both stylistic and functional terms.



HPL laminate faced door leaf

XyloDoor FD30
XyloDoor FD60

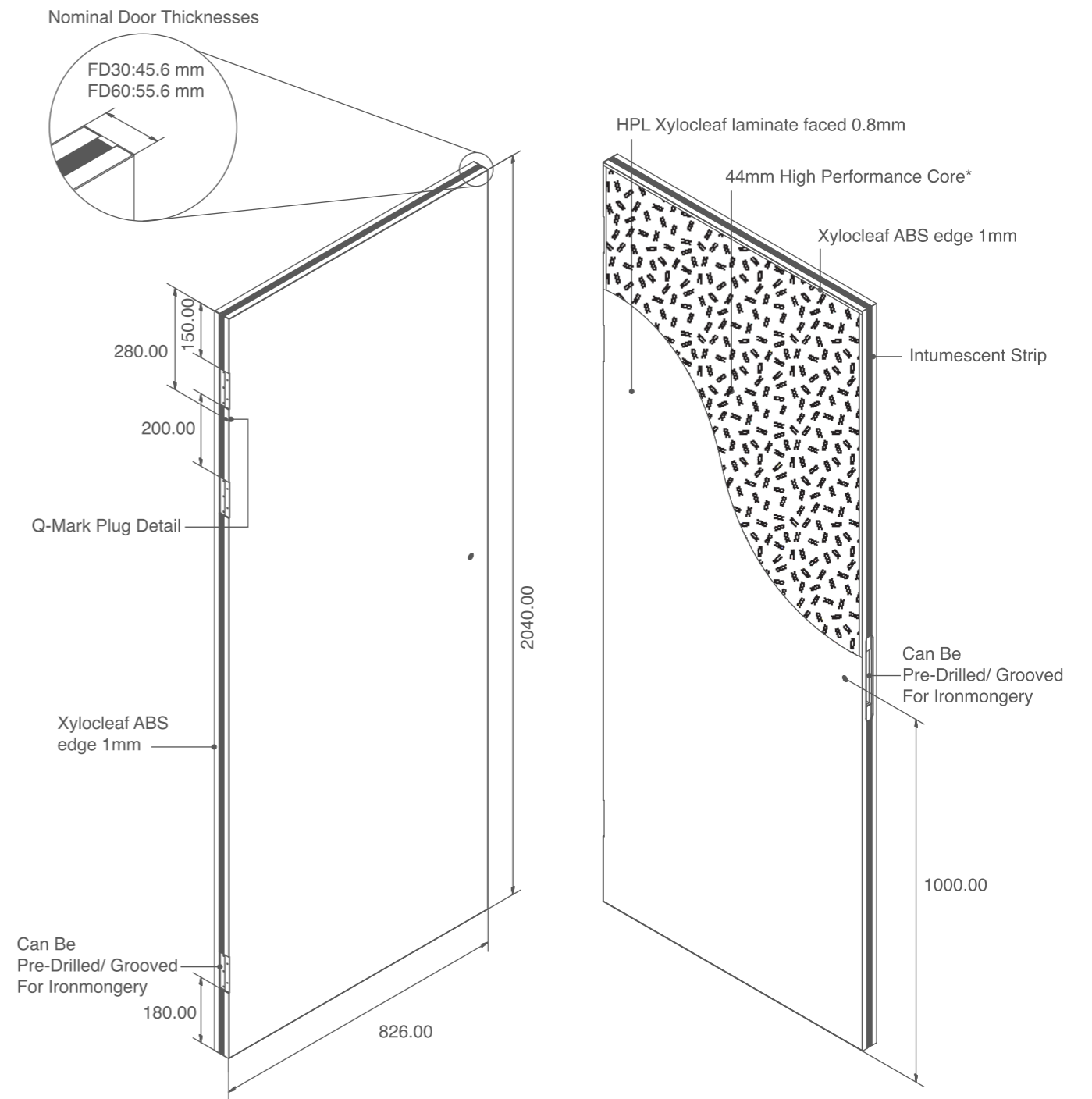
door leaf

The door leaf with optional Q-Mark third party fire accreditation where required, developed by XyloCleaf is composed of four main elements:

- 0.8mm XyloCleaf HPL face
- 44mm Strebord GDC Fire Rated Core
- Hardwood Lipping where required
- Finishing with co-ordinated 1.0mm XyloCleaf ABS edge

The selection of decorative surfaces available in HPL laminate for the XyloCleaf door, is expanding month by month in the UK.

Q-Mark fire door certification ensures registered companies adhere to strict guidelines for Fire Door manufacture. Please note it is the responsibility of the installation company to ensure that best practice is followed for fire door assembly compliance.



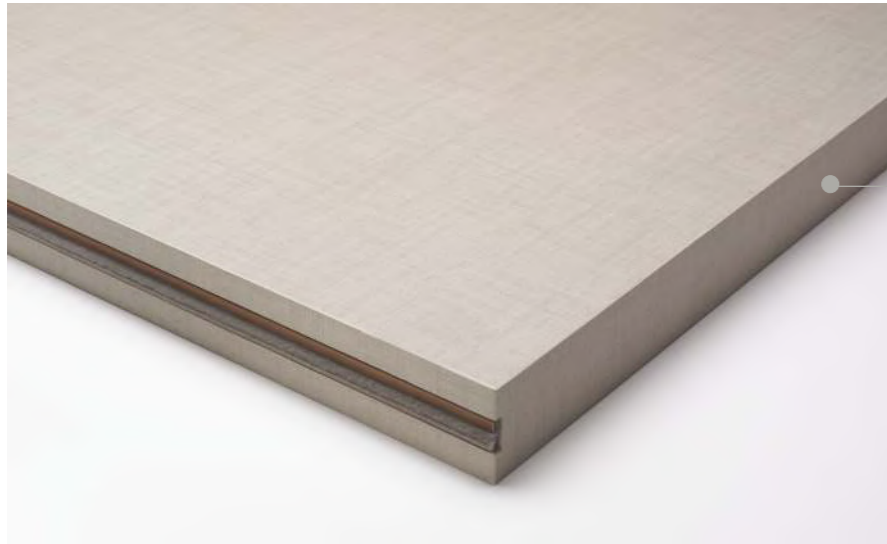
*Cores can be specified for specific applications



Certified fire door core material



Hardwood lipping to maintain fire integrity



Seamless color matched finishes



Typical intumescent detail in door leaf (fire or smoke control)



Typical Q-Mark 3rd party fire door identification



1.00mm ABS XYLODOOR edgebanding



Option 1 - Yellow outer / Red inner
Grooved.
Intumescent in door (supplied by others).
No glazing.



Option 2 - Yellow outer / Green inner
Intumescent in door fitted by manufacturer.
No glazing.



Option 3 - Yellow outer / Orange inner
Approved Door.
Glazing by manufacturer.



**Option 4 - Yellow outer / Red inner
Yellow outer / Orange inner**
Grooved.
Intumescent in door (supplied by others).
Glazing by manufacturer.



**Option 5 - Yellow outer / Green inner
Yellow outer / Orange inner**
Intumescent in door fitted by manufacturer.
Glazing by manufacturer.



Additional silver inner plug for Q-Mark door frames
(Where Applicable)



Fire Door 60 Q-Mark certified - Plugs coding

Xylo Door FD60



Option 1 - Blue outer / Red inner
Grooved.
Intumescent in door (supplied by others).
No glazing.

Option 2 - Blue outer / Green inner
Intumescent in door fitted by manufacturer.
No glazing.



Option 3 - Blue outer / Orange inner
Approved Door.
Glazing by manufacturer.

Option 4 - Blue outer / Red inner
Blue outer / Orange inner
Grooved.
Intumescent in door (supplied by others).
Glazing by manufacturer.



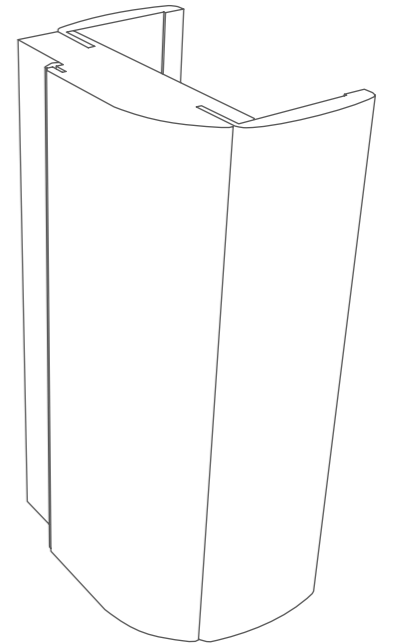
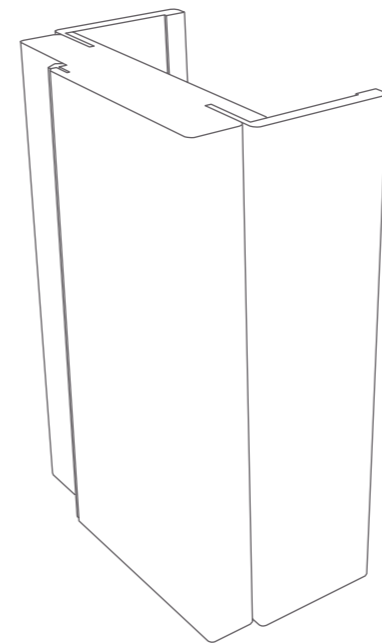
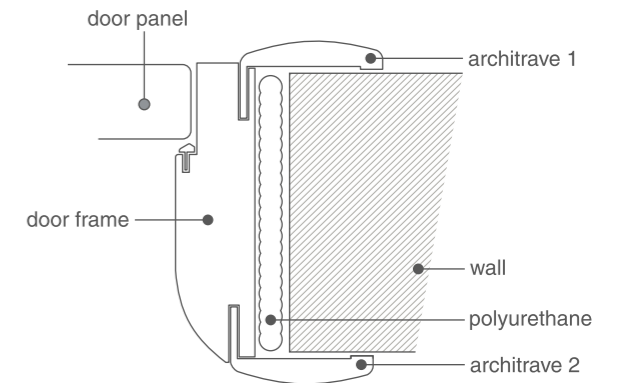
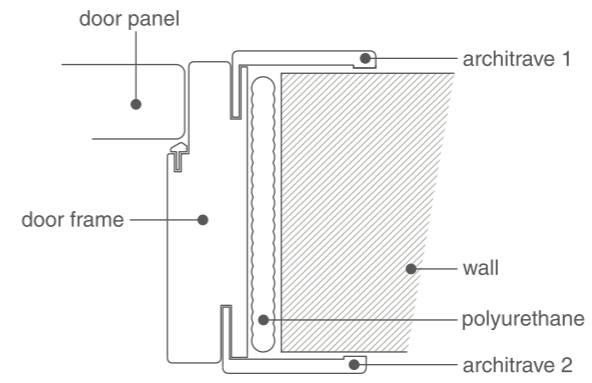
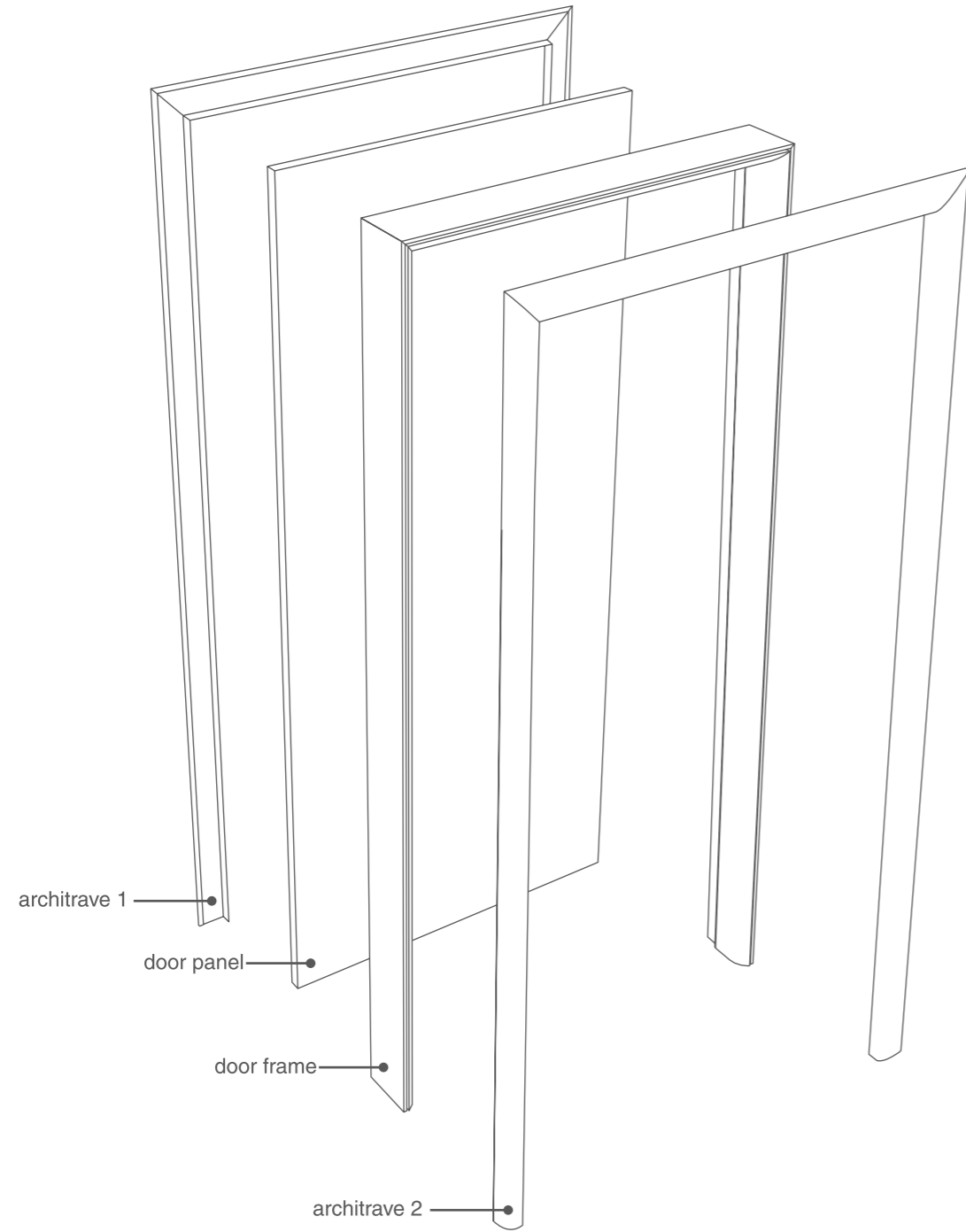
Option 5 - Blue outer / Green inner
Blue outer / Red inner
Intumescent in door fitted by manufacturer.
Glazing by manufacturer.

Additional silver inner plug for Q-Mark door frames
(Where Applicable)



door system assembly

examples of application to different types of frame





catalogue of XYLOCLEAF surfaces

XYLOCLEAF PANELS

The dimensions of the XyloCleaf panels in stock is as follows:

All surface collections 18mm x 2800 x 2070 mm

Kristall collection 19mm x 2790 x 1300 mm

Fusion collection 19mm x 2800 x 1350 mm

XYLOCLEAF ABS edge band

23mm wide x 100lm x 1mm

56mm wide x 100lm x 1mm

XYLOCLEAF HPL LAMINATES

All XyloCleaf products, excluding the Krystall and Fusion products, are also available in HPL Laminates with sheet size

0.8mm x 3050mm x 1300mm

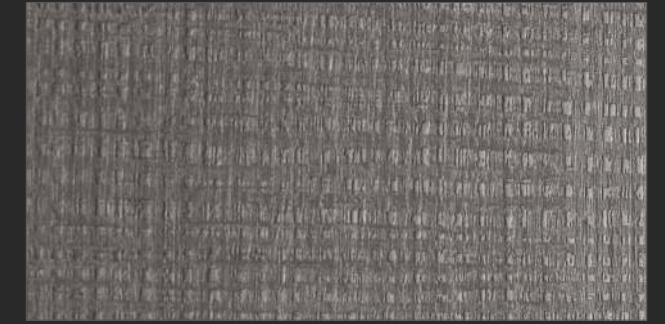
Index of surfaces

Alter / Azimut / Matrix / Nadir	053-054
Penelope / Primo Fiore	055-056
Scultura / Spigato / Tranche / Toucher / Yosemite	057-058
Ares / Maloja / Scacomatto / Damier / Surf / Shanghai	059-060
Sable / Tivoli / Millennium / Pembroke	061-062
Sherwood / Ametis / Reflex / Fusion	063-064
Concreta / Esperia / Kristall	065-066
Surface thicknesses	067-070

XyloCleaf constantly develops new designs, surfaces and products available on our website.

The colours and surfaces shown in the catalogue are merely an indication and may undergo variation compared to the real products. Texts and drawings are presented in this catalogue for publishing purposes. XyloCleaf reserves the right, at any time, to make changes in the products in this catalogue for technical and commercial purposes.

All the products shown in our catalogue are kept in stock in the UK.

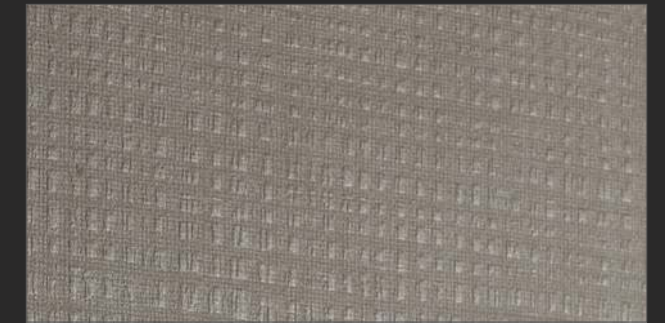


Bianco B073 Alter

French Grey S027 Azimut

Condotti FB06 Nadir

Old King LN01 Nadir

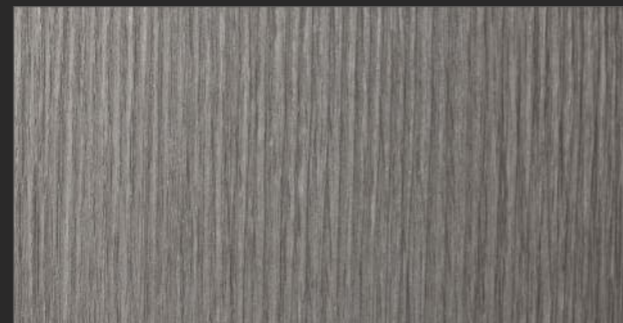


Portland S022 Azimut

Vintage LM63 Matrix

Grigio UA99 Nadir

Confort FA42 Nadir

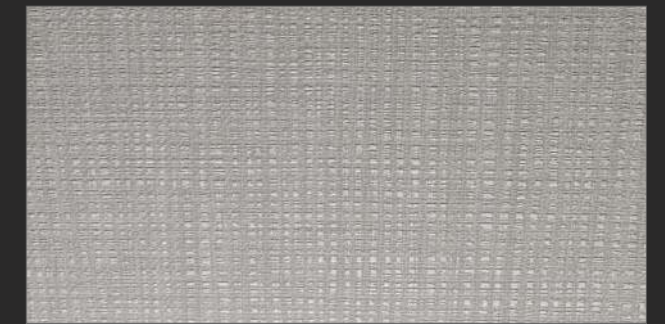
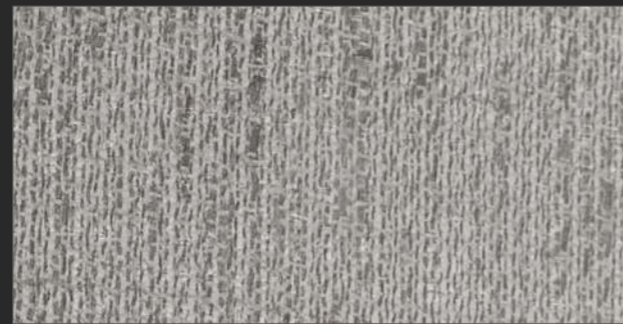
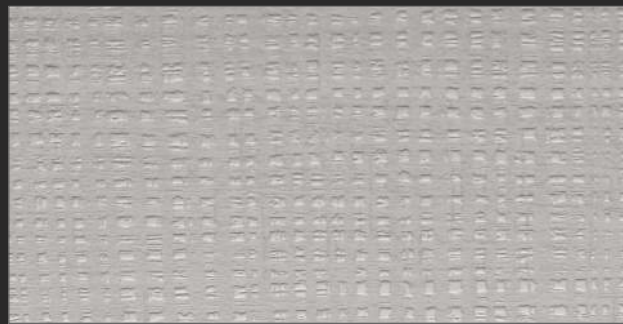


Vintage LM62 Matrix

Rovere LK99 Matrix

Greige FA45 Nadir

Cardigan FB13 Nadir

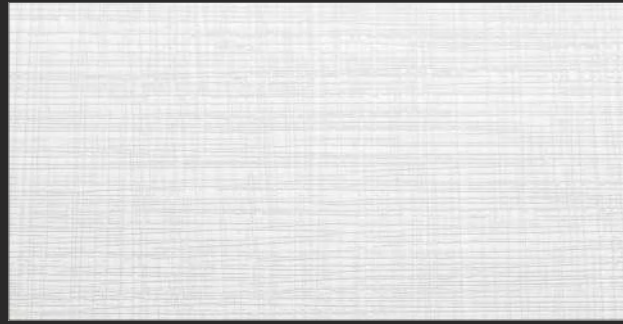


Old King LN00 Nadir

Condotti FA97 Nadir

Overcoat FB17 Nadir

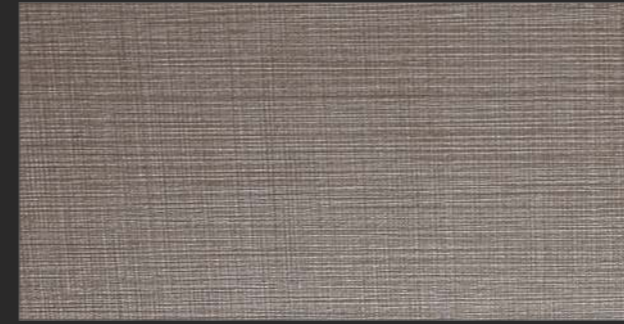
Scarf FB04 Nadir



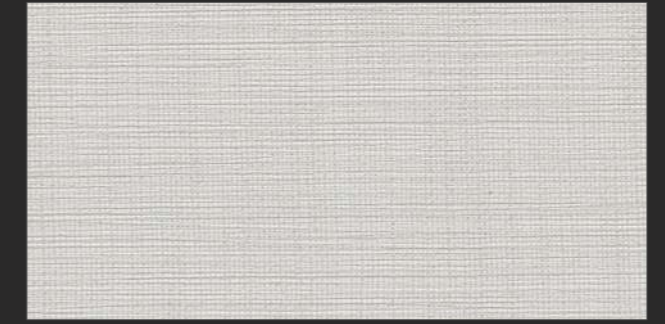
Bianco B026 Penelope



Maya Bronze FA33 Penelope



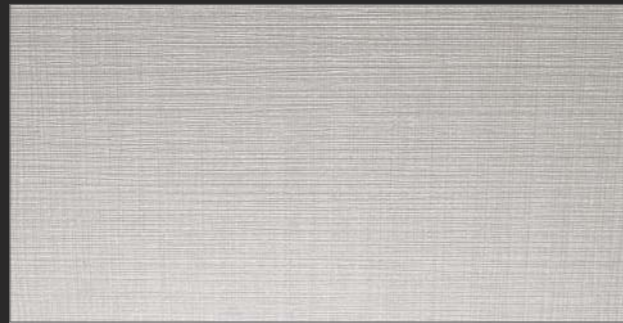
Cannella FA60 Penelope



Lino FA77 Penelope



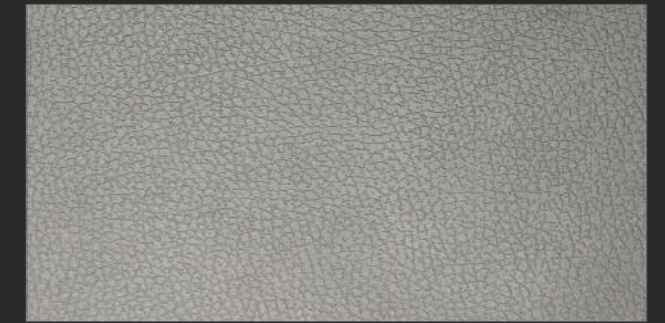
Maya Silver FA34 Penelope



Delave FA41 Penelope



Metallizzato FB35 Penelope



Grigio UA49 Primo Fiore



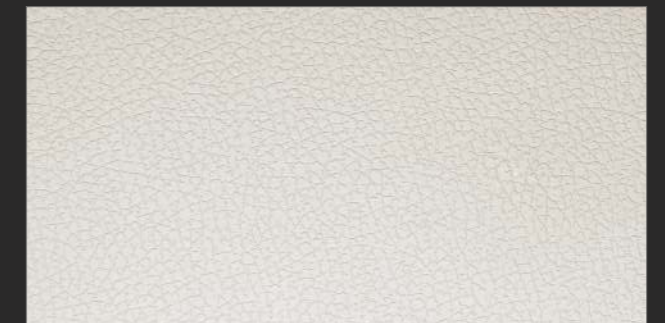
Confort FA42 Penelope



Kaki FA44 Penelope



Grigio UA99 Primo Fiore



Crema UB05 Primo Fiore



Guerrilla FA46 Penelope



Urban Grey FA47 Penelope



Tatami FB34 Primo Fiore



Tatami FB32 Primo Fiore

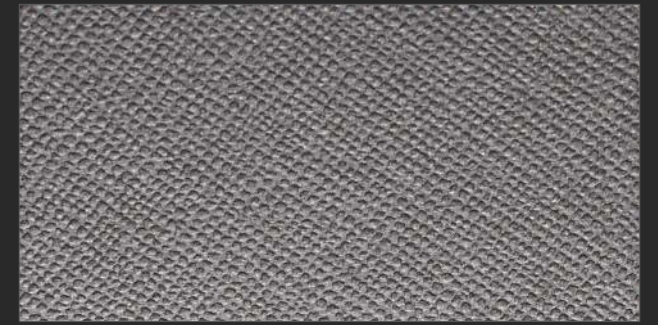
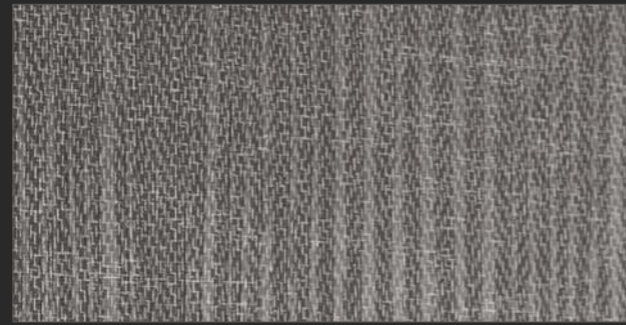
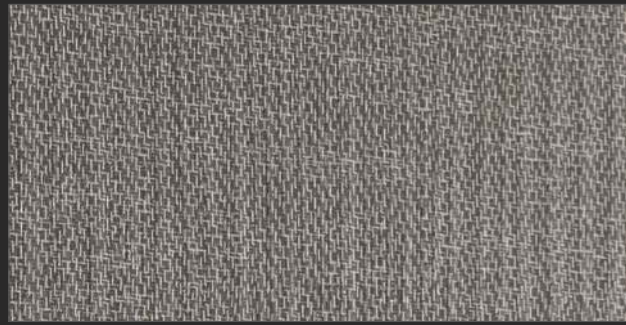


Old America LM09 Scultura

Santos Grey LM98 Scultura

Winter Time LN27 Tranche

Beige UA92 Toucher

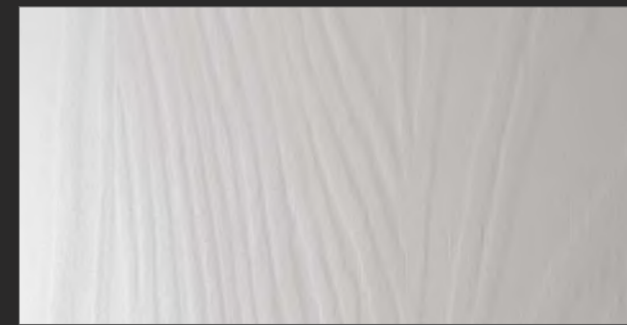
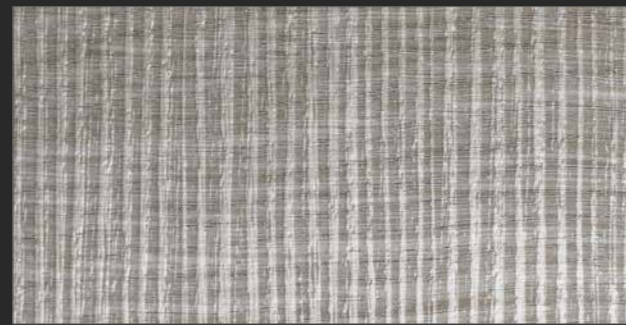


Levante FA90 Spigato

Corteccia FA91 Spigato

Bianco B013 Toucher

Cartesio FA78 Toucher



Avegnue FA96 Spigato

Royal LN28 Tranche

Bianco B073 Yosemite

Champagne S010 Yosemite



Dark Lady LM08 Tranche

Aspen Oak LM67 Tranche

Burned S012 Yosemite

Light Carbon S015 Yosemite



Beton FB02 Ares



Iris FB45 Ares



Grigio UA32 Maloja



Vulcano FB47 Ares



Vulcano FB48 Ares



Maya Bronze FA33 Scaccomatto



Bianco B073 Damier



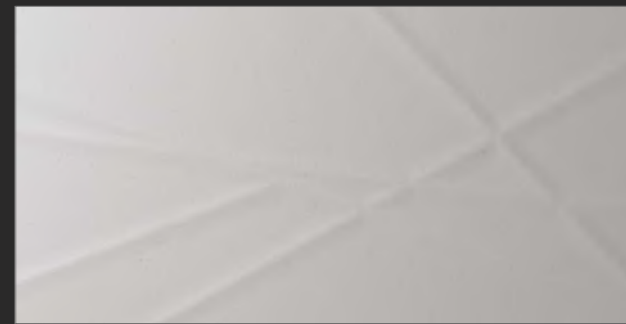
Vulcano FB49 Ares



Marrone UB09 Ares



Bianco B073 Surf



Bianco B073 Shanghai



Cannella FA60 Shanghai



Bagnola LR17 Sable

Fiascherino LR18 Sable

Eno S144 Tivoli

Kaki FA44 Millennium



Pugliola LR20 Sable

Ascari LR25 Sable



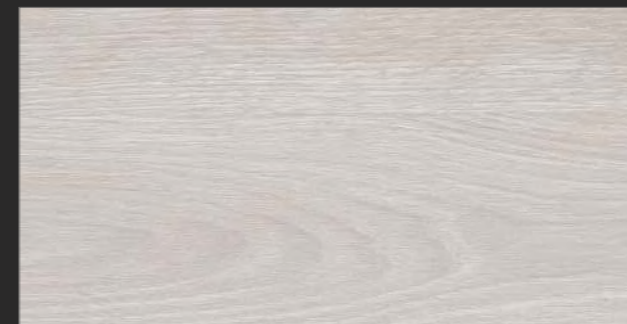
Fittipaldi LR29 Sable

Villa Ada LR49 Sable



Nekinger S121 Pembroke

Tyburn S122 Pembroke



Weatbourne S127 Pembroke



Hyde Park S070 Sherwood



Centauri FB63 Reflex



Eris FB64 Reflex



Greenwich Park S071 Sherwood



St Jame's Park SO73 Sherwood



0123T Fusion



Mediterraneo T048/FA44 Fusion



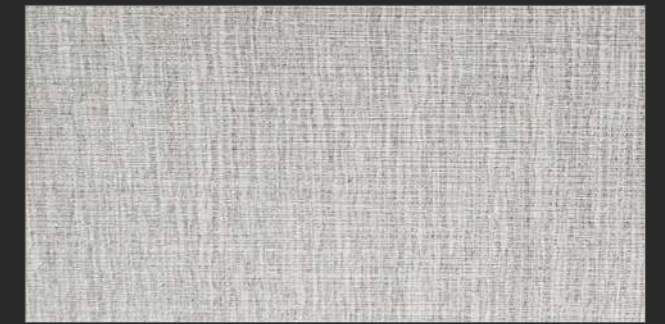
Madreperla FA68 Ametis



Grigio UB19 Ametis



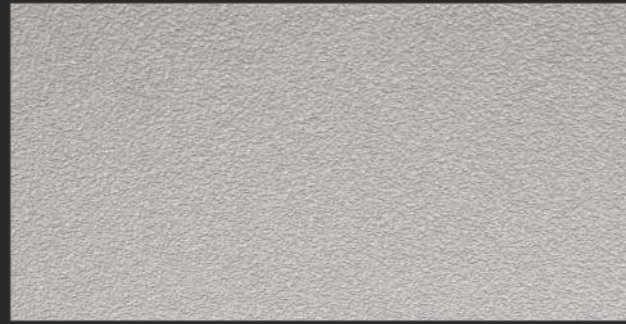
Mediterraneo T057/FA44 Fusion



Let It Be T231/B011 Fusion



Landscape FB50 Concreta



Lunar FB53 Concreta



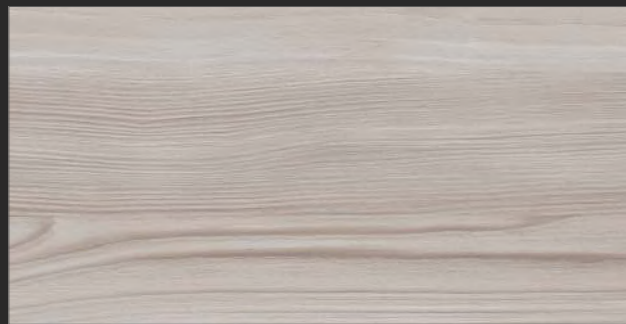
Cream FB55 Concreta



Madrid S133 Esperia



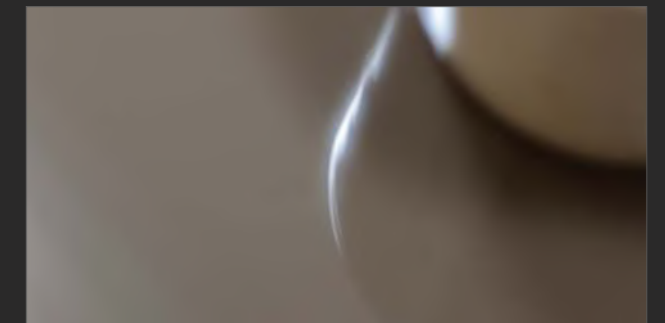
Dublin S135 Esperia



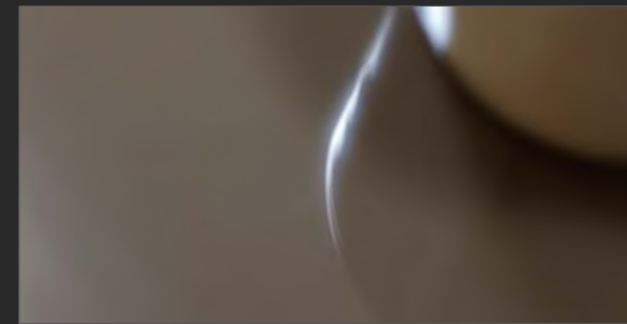
Tokyo S137 Esperia



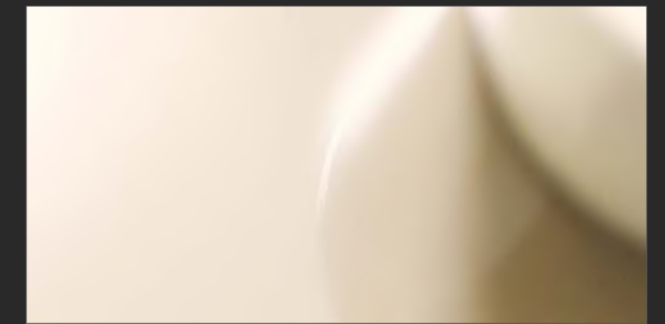
Total White KR01 Kristall



Visone KR02 Kristall



Caffe KR03 Kristall



Canapa KR10 Kristall

surface thicknesses

	4mm	8mm	12mm	18mm	19mm	22mm	25mm	28mm	38mm	HPL
PRODUCT										
Bianco BO73 Alter	*	*	*	*		*	*	*	*	*
French Grey S027 Azimut	*	*	*	*		*	*	*	*	*
Portland S022 Azimut	*	*	*	*		*	*	*	*	*
Vintage LM63 Matrix	*	*	*	*		*	*	*	*	*
Vintage LM62 Matrix	*	*	*	*		*	*	*	*	*
Rovere LK99 Matrix	*	*	*	*		*	*	*	*	*
Old King LN00 Nadir	*	*	*	*		*	*	*	*	*
Condotti FA97 Nadir	*	*	*	*		*	*	*	*	*
Condotti FB06 Nadir	*	*	*	*		*	*	*	*	*
Old King LN01 Nadir	*	*	*	*		*	*	*	*	*
Grigio UA99 Nadir	*	*	*	*		*	*	*	*	*
Confort FA42 Nadir	*	*	*	*		*	*	*	*	*
Greige FA45 Nadir	*	*	*	*		*	*	*	*	*
Cardigan FB13 Nadir	*	*	*	*		*	*	*	*	*
Overcoat FB17 Nadir	*	*	*	*		*	*	*	*	*
Scarf FB04 Nadir	*	*	*	*		*	*	*	*	*
Bianco B026 Penelope	*	*	*	*		*	*	*	*	*
Maya Bronze FA33 Penelope	*	*	*	*		*	*	*	*	*
Maya Silver FA34 Penelope	*	*	*	*		*	*	*	*	*
Delave FA41 Penelope	*	*	*	*		*	*	*	*	*
Confort FA42 Penelope	*	*	*	*		*	*	*	*	*
Kaki FA44 Penelope	*	*	*	*		*	*	*	*	*
Guerrilla FA46 Penelope	*	*	*	*		*	*	*	*	*
Urban Grey FA47 Penelope	*	*	*	*		*	*	*	*	*
Cannella FA60 Penelope	*	*	*	*		*	*	*	*	*
Lino FA77 Penelope	*	*	*	*		*	*	*	*	*
Metallizzato FB35 Penelope	*	*	*	*		*	*	*	*	*
Grigio UA49 Primo Fiore	*	*	*	*		*	*	*	*	*
Grigio UA99 Primo Fiore	*	*	*	*		*	*	*	*	*
Crema UB05 Primo Fiore	*	*	*	*		*	*	*	*	*
Tatami FB34 Primo Fiore	*	*	*	*		*	*	*	*	*
Tatami FB32 Primo Fiore	*	*	*	*		*	*	*	*	*
Old America LM09 Scultura	*	*	*	*		*	*	*	*	*
Santos Grey LM98 Scultura	*	*	*	*		*	*	*	*	*
Levante FA90 Spigato	*	*	*	*		*	*	*	*	*
Corteccia FA91 Spigato	*	*	*	*		*	*	*	*	*
Avegnue FA96 Spigato	*	*	*	*		*	*	*	*	*
Royal LN28 Tranche	*	*	*	*		*	*	*	*	*
Dark Lady LM08 Tranche	*	*	*	*		*	*	*	*	*
Aspen Oak LM67 Tranche	*	*	*	*		*	*	*	*	*
Winter Time LN27 Tranche	*	*	*	*		*	*	*	*	*

	4mm	8mm	12mm	18mm	19mm	22mm	25mm	28mm	38mm	HPL
PRODUCT										
Beige UA92 Toucher	*	*	*	*		*	*	*	*	*
Bianco BO13 Toucher	*	*	*	*		*	*	*	*	*
Cartesio FA78 Toucher	*	*	*	*		*	*	*	*	*
Bianco BO73 Yosemite	*	*	*	*		*	*	*	*	*
Champagne SO10 Yosemite	*	*	*	*		*	*	*	*	*
Burned SO12 Yosemite	*	*	*	*		*	*	*	*	*
Light Carbon SO15 Yosemite	*	*	*	*		*	*	*	*	*
Beton FB02 Ares	*	*	*	*		*	*	*	*	*
Iris FB45 Ares	*	*	*	*		*	*	*	*	*
Vulcano FB47 Ares	*	*	*	*		*	*	*	*	*
Vulcano FB48 Ares	*	*	*	*		*	*	*	*	*
Vulcano FB49 Ares	*	*	*	*		*	*	*	*	*
Marrone UB09 Ares	*	*	*	*		*	*	*	*	*
Grigio UA32 Maloja	*	*	*	*		*	*	*	*	*
Maya Bronze FA33 Scaccomatto	*	*	*	*		*	*	*	*	*
Bianco BO73 Damier	*	*	*		*	*	*	*	*	
Bianco BO73 Surf	*	*	*		*	*	*	*	*	
Bianco BO73 Shanghai	*	*	*		*	*	*	*	*	
Cannella FA60 Shanghai	*	*	*		*	*	*	*	*	
Bagnola LR17 Sable	*	*	*	*		*	*	*	*	*
Fiascherino LR18 Sable	*	*	*	*		*	*	*	*	*
Pugliola LR20 Sable	*	*	*	*		*	*	*	*	*
Ascari LR25 Sable	*	*	*	*		*	*	*	*	*
Fittipaldi LR29 Sable	*	*	*	*		*	*	*	*	*
Villa Ada LR49 Sable	*	*	*	*		*	*	*	*	*
Eno S144 Tivoli	*	*	*	*		*	*	*	*	*
Kaki FA44 Millennium	*	*	*	*		*	*	*	*	*
Nekinger S121 Pembroke	*	*	*	*		*	*	*	*	*
Tyburn S122 Pembroke	*	*	*	*		*	*	*	*	*
Weatbourne S127 Pembroke	*	*	*	*		*	*	*	*	*
Hyde Park S070 Sherwood	*	*	*	*		*	*	*	*	*
Greenwich Park S071 Sherwood	*	*	*	*		*	*	*	*	*
St Jame's Park S073 Sherwood	*	*	*	*		*	*	*	*	*
Madreperla FA68 Ametis	*	*	*	*		*	*	*	*	*
Grigio UB19 Ametis	*	*	*	*		*	*	*	*	*
Centauri FB63 Reflex	*	*	*	*		*	*	*	*	*
Eris FB64 Reflex	*	*	*	*		*	*	*	*	*
0123T Fusion	*	*	*	*		*	*	*	*	
Mediterraneo T048 / FA44 Fusion	*	*	*	*		*	*	*	*	
Mediterraneo T057 / FA44 Fusion	*	*	*	*		*	*	*	*	
Let It Be T231 / B011 Fusion	*	*	*	*		*	*	*	*	

surface thicknesses

	4mm	8mm	12mm	18mm	19mm	22mm	25mm	28mm	38mm	HPL
PRODUCT										
Landscape FB50 Concreta	*	*	*	*		*	*	*	*	*
Lunar FB53 Concreta	*	*	*	*		*	*	*	*	*
Cream FB55 Concreta	*	*	*	*		*	*	*	*	*
Madrid S133 Esperia	*	*	*	*		*	*	*	*	*
Dublin S135 Esperia	*	*	*	*		*	*	*	*	*
Tokyo S137 Esperia	*	*	*	*		*	*	*	*	*
Total White KR01 Kristall	*	*	*		*	*	*	*	*	
Visone KR02 Kristall	*	*	*		*	*	*	*	*	
Caffe KR03 Kristall	*	*	*		*	*	*	*	*	
Canapa KR10 Kristall	*	*	*		*	*	*	*	*	

XYLOCLEAF PANELS

The dimensions of the XyloCleaf panels in stock is as follows:

All surface collections 18mm x 2800 x 2070 mm

Kristall collection 19mm x 2790 x 1300 mm

Fusion collection 19mm x 2800 x 1350 mm

XYLOCLEAF ABS edge band

22mm wide x 100lm x 1mm

56mm wide x 100lm x 1mm

XYLOCLEAF HPL LAMINATES

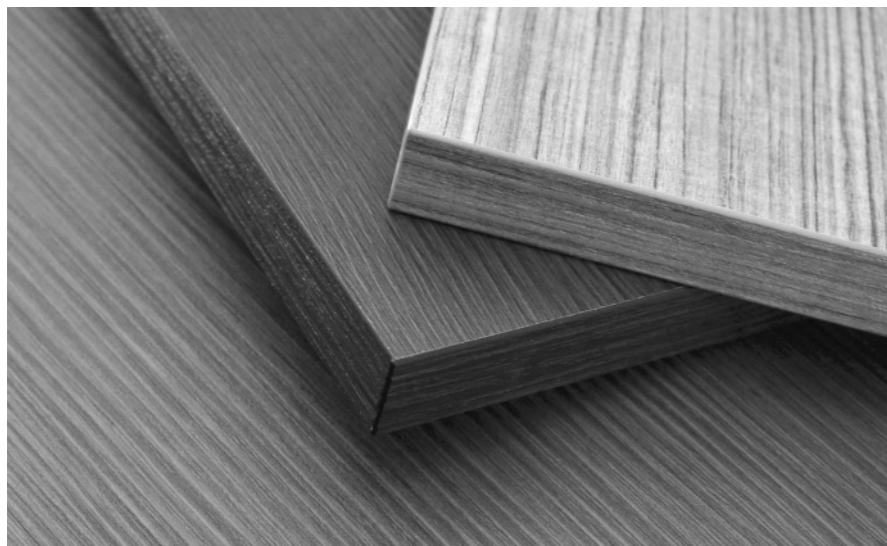
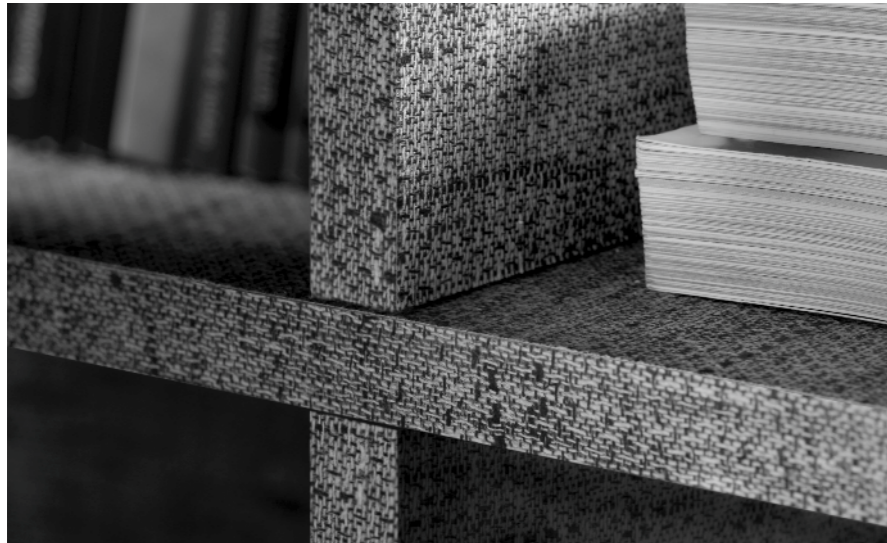
XyloCleaf products, excluding the Kristall and Fusion products, are also available in HPL Laminates with sheet size 0.8mm x 3050mm x 1300mm

XYLOCLEAF thicknesses availability

Please note that the XyloCleaf product thicknesses shown in this catalogue are subject to change without notice.



XYLOCLEAF edges



ABS EDGE BAND

XyloCleaf creates ideal solutions both in technology, design and aesthetics, for the main element of the panels and the framing of the edges.

XyloCleaf consistently meets the dual challenge in both areas of research: edges versus panel requirements and panel versus edge finishing. As a result, uniformity is achieved in both product design and product manufacturing.



widths:
from 14 mm to 320 mm

thicknesses:
10/10
available from stock

5/10 - 15/10 - 20/10
non-stock, subject to a minimum order quantity

ABS EDGE BAND: TECHNICAL DATA SHEET

Printing and embossing may be applied on extruded ABS laminate. A primer at the back side of the surface enables its adhesion by using any glue that is suitable for the wood industry.

technical characteristics

Width: **Rolls of 100LM** Thickness: **From 0.50mm to 2.5mm** Finish: Matt, semi matt or gloss
Texture: Flat or textured

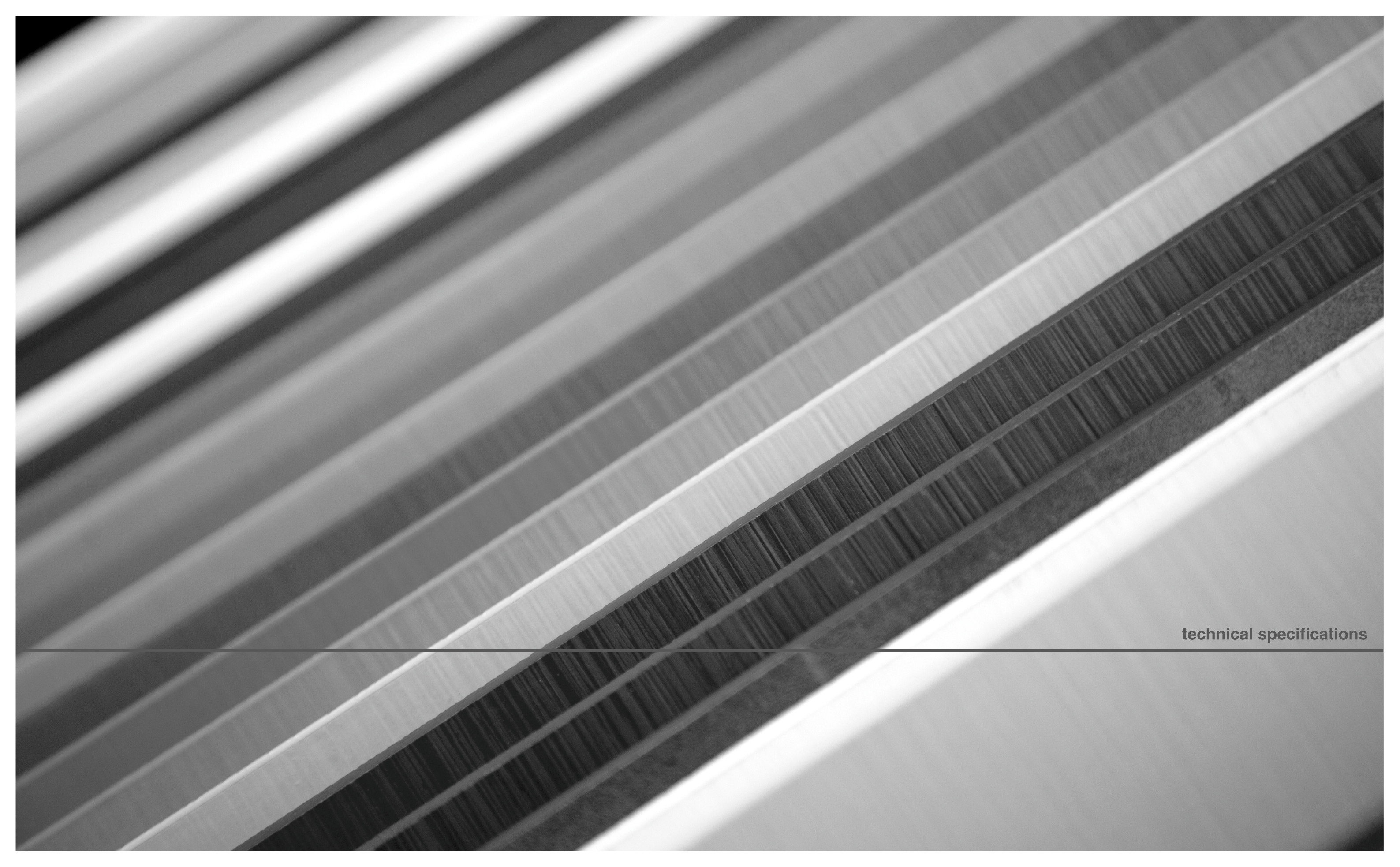
Gloss 60°	According to the structure +/-3 gloss
Length tolerance	+/- 3%
Width tolerance	-0/+0.5mm
Formaldehyde emission	Does not contain formaldehyde
Unicolour	DE ≤ 1,5
Printed colors	Matchable with reference sample (according to the first production)

GLUING

The back side of the edge band disposes of a specific primer that enables an impeccable gluing, which can be easily achieved by using the most common glues found in the wood industry (EVA hot melt, polyolefinic and polyurethanic glues). A preliminary test for compatibility is, however, recommended. For optimal adhesion, you may refer to the technical specifications of glue manufacturers. More specifically, please ensure that the temperature of both the panel and the edge is never lower than 18°C. Good storage conditions (cool and dry warehouse without exposure to direct sunlight and sudden temperature changes) will ensure the preservation of the primer's performance for a period of at least 12 months.

CLEANING & MAINTENANCE

The edge band surface is protected by a clear lacquer coating that ensures good resistance to scratches, stains and to cleaning and chemical agents. For cleaning, it is preferable to choose a detergent for domestic use. It is recommended that you avoid spraying products directly onto the surface, as this may leave stains and marks; instead, it is preferable to apply the detergent product on a soft damp cloth, clean the surface and then rinse it. Avoid using abrasive products, bleach or highly chlorinated products or acids.



technical specifications

THERMAL STRUCTURE SURFACE(TSS)

TSS is the result of the work at Cleaf's surface research lab, a team focusing on the research and development of surfaces of top aesthetic and technological value.

The application of an irreversible thermal hardening treatment and the special preparation and processing allow remarkable tridimensional effects, bringing the surface to life and endowing it with extraordinary technical performance. The highest possible resilience to scratching and chemical substances as well as an amazing feel.

These surfaces are ideal for interior design, as they are made available both as panels and laminated surfaces and therefore can be used in furniture or wardrobes, kitchens, bathrooms, doors, wall coverings, cubicles and partitions.

Non recycled chipboard to be used internally (type P2 according to EN 312) faced on the top side with melamine decor patterns through a pressing process.

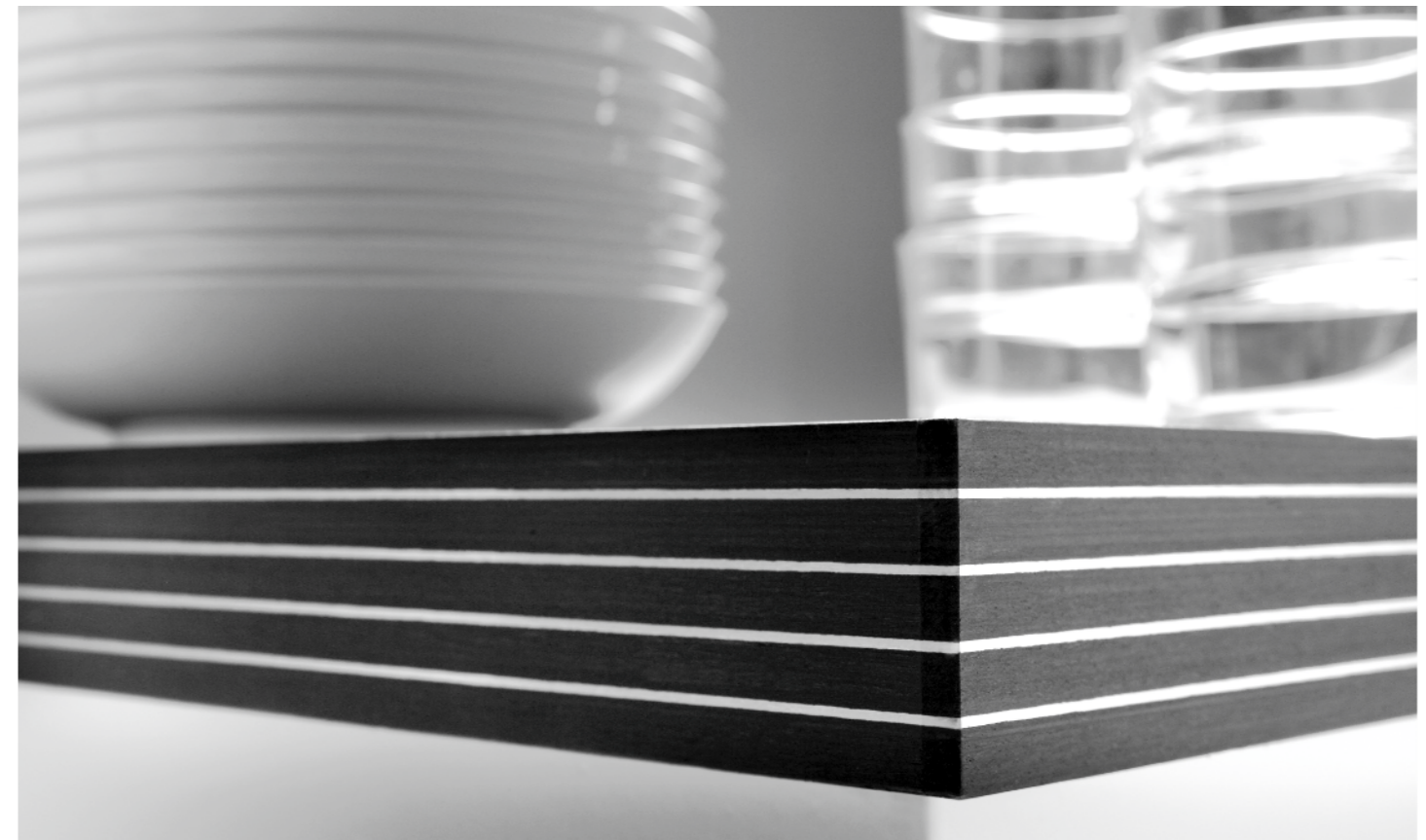
Available on request FSC-COC, water and fire resistant.

surface characteristics

Resistance to abrasion	EN 14323	printed colours class 1, solid colours class 3A
Resistance to water steam	EN 14323	≥ level 4
Resistance to scratch	EN 14323	≥ 1.5 N
Resistance to stain	EN 14323	group 1 e 2, class ≥ 4
Resistance to light	EN 14323	≥ 6 blue wool scale
Resistance to cracks	EN 14323	class ≥ 3
Resistance to dry heat	EN 12722	class B
Tendency to keep dirt	UNI 9300	≥ level 4

*legend

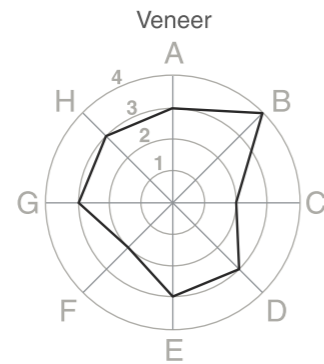
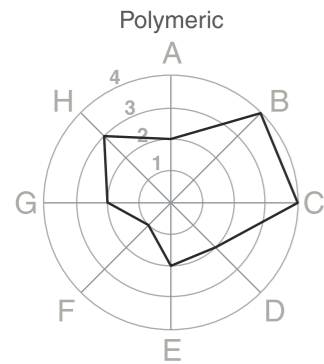
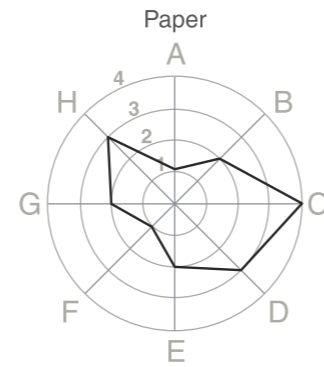
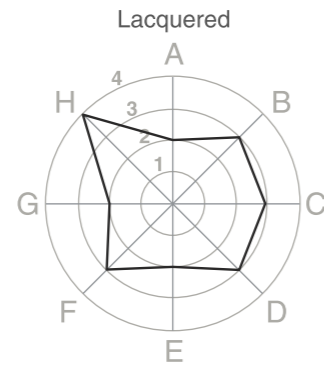
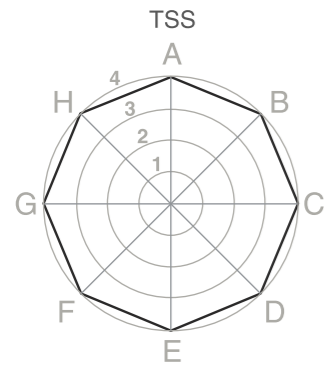
Level 5 - No visible change
 Level 4 - Slight change, only visible at certain angles
 Level 3 - Moderate change of gloss and/or colour
 Level 2 - Marked change of gloss and/or colour
 Level 1 - Surface distortion and/or blistering



THERMAL STRUCTURE SURFACE(TSS)

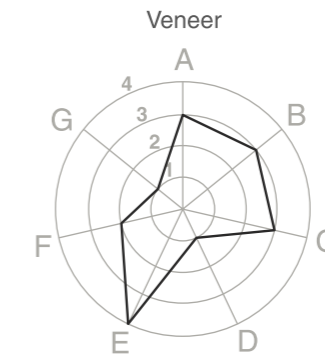
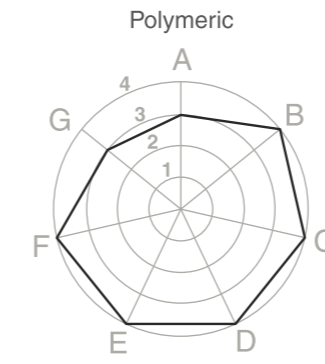
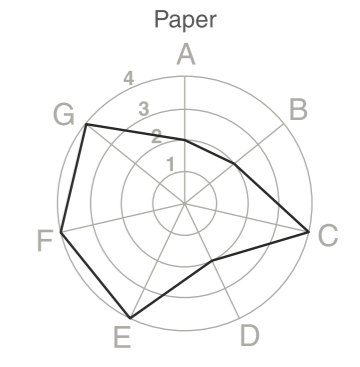
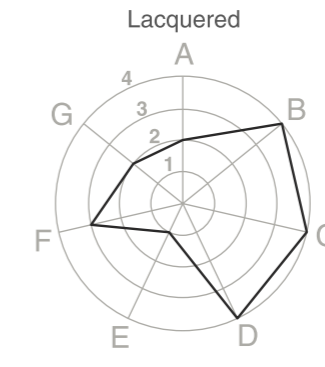
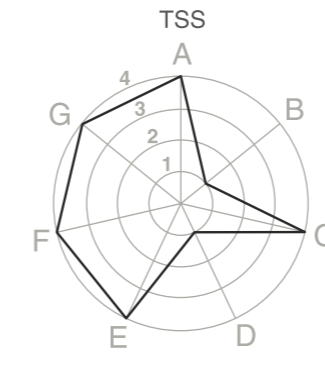
technical characteristics

	TSS	Lacquered	Paper	Polymeric	Veneer
A. Resistance to scratch	4	2	1	2	3
B. Resistance to wear	4	3	2	4	4
C. Resistance to light	4	3	4	4	2
D. Resistance to heat	4	3	3	2	3
E. Resistance to stain	4	2	2	2	3
F. Resistance to solvents	4	3	1	1	2
G. Cleaning and maintenance	4	2	2	2	3
H. Gluing	4	4	3	3	3



technical characteristics

	TSS	Lacquered	Paper	Polymeric	Veneer
A. Embossing deepness	4	2	2	3	3
B. High gloss quality	1	4	2	4	3
C. 2D profiles	4	4	4	4	3
D. 3D profiles	1	4	2	4	1
E. Print quality	4	1	4	4	4
F. Colour consistency	4	3	4	4	2
G. Price	4	2	4	3	1



MELAMINE FACED TSS - PARTICLE BOARD PANELS

Particle board (chipboard) of non-recycled wood for interior use (type P2 in accordance with standard EN 312). On the top side, the product disposes of decorative melamine through a pressing process. Available on request: FSC-COC, water repellent and fire resistant.

technical characteristics

Resistance to abrasion	EN 14323	Printed Class 1, Unicolour Class 3A
Resistance to water steam	EN 14323	≥ Level 4
Resistance to scratches	EN 14323	≥ 1,5N
Resistance to stains	EN 14323	Group 1 & 2, class ≥ 4
Resistance to light	EN 14323	≥ 6 blue wool scale
Resistance to cracks	EN 14323	Class ≥ 3
Resistance to dry heat	EN 12722	Class B
Tendency to retain dirt	UNI 9300	Level ≥ 4

Particle board technical characteristics

Composition	Wood	trunks, stems, branches, logs, billets, root collars, fast-growing trees and shrubs, residues from sawmilling, veneer cutting, joinery and carpentry of broad-leaved and coniferous species, 78 - 88%
	Adhesive	Urea – formaldehyde glue, 7 - 9%
	Additives	Water, 5 - 13% - Ammonium sulfate, 0.2% - Paraffin Traces

Density	EN 323	500 - 700 Kg/m ³
Moisture content	EN 322	5 - 13%
Formaldehyde content	EN 120	Class E1 <8mg/100g
	ASTM E1333-96	CARB (2) <0.09ppm

Dimensional tolerances	Thickness vs. nominal value	≤15mm +/-0.2mm	≥15mm +/-0.3mm
	Thickness within the panel	EN 14323	+/-0.3mm
	Length and width		+/-5mm

Planarity (both sides melamine faced ≥ 15mm)	EN 14323	≤ 2mm/m
Surface defects	EN 14323	Spots: ≤2 mm ² /m ² Length: ≤20 mm/m ²

Requirements	Standard	>3mm ≤4mm	>4mm ≤6mm	>6mm ≤13mm	>13mm ≤20mm	>20mm ≤25mm	>25mm ≤32mm	>32mm ≤40mm	>40mm
Internal bonding N/mm ²	EN 319	> 0,45	> 0,45	> 0,40	> 0,35	> 0,30	> 0,25	> 0,20	> 0,20
Bending strength N/mm ²	EN 310	> 13	> 15	> 14	> 13	> 11,5	> 10	> 8,5	> 7
Elasticity modulus N/mm ²	EN 310	> 1800	> 1950	> 1800	> 1600	> 1500	> 1350	> 1200	> 1050
Surface delamin. N/mm ²	EN 311	> 0,8	> 0,8	> 0,8	> 0,8	> 0,8	> 0,8	> 0,8	> 0,8

ON REQUEST:

-Water repellent melamine faced particle board

Same properties as the standard panel, but with water resistance:

Requirements	Standard	>3mm ≤4mm	>4mm ≤6mm	>6mm ≤13mm	>13mm ≤20mm	>20mm ≤25mm	>25mm ≤32mm	>32mm ≤40mm	>40mm
Swelling H ₂ O 24hr(*) V100	EN317	-	-	< 11%	< 10%	< 10%	< 9%	< 9%	< 9%
Int. bond. after H ₂ O N/mm ² (*) V100	EN1087	-	-	> 0,15	> 0,14	> 0,12	> 0,11	> 0,10	> 0,09

-Fire resistant melamine faced particle board - B-s2, d0 EN 13986 EN13501-1 - Class BASTM E84 NFPA 101

-Fsc certified melamine faced particle board - FSC mix 75% ICILA-COC-000343

STORAGE AND HANDLING

Goods must be stored in a dry and ventilated place (relative air humidity 35%-65%). Do not store with inflammable substances. If exposed to direct sunlight, the laminate may deteriorate. Stacks should be stored correctly, at a manageable height to ensure stability. To avoid warping or damp stains, place the panels on pallets with adequate spaces. When handling the laminates, use suction pads or gloves. Machinery and equipment must be fitted with suitable aspiration systems.

CLEANING & MAINTENANCE

The melamine surfaces are the most resistant among those used in the furniture field. For cleaning, it is preferable to choose a detergent for domestic use. It is recommended that you avoid spraying products directly onto the surface, as this may leave stains and marks; instead, it is preferable to apply the detergent product on a soft damp cloth, clean the surface and then rinse it. Avoid using abrasive products, bleach or highly chlorinated products or acids.

MELAMINE FACED TSS - MDF BOARD PANELS

Medium Density Fiberboard (MDF) for interior use. A melamine decorative surface is placed on its top side through a pressing process. Available on request: FSC-COC, water repellent and fire resistant.

technical characteristics

Resistance to abrasion	EN 14323	Printed Class 1, Unicolour Class 3A
Resistance to water steam	EN 14323	≥ Level 4
Resistance to scratches	EN 14323	≥ 1,5N
Resistance to stains	EN 14323	Group 1 & 2, class ≥ 4
Resistance to light	EN 14323	≥ 6 blue wool scale
Resistance to cracks	EN 14323	Class ≥ 3
Resistance to dry heat	EN 12722	Class B
Tendency to retain dirt	UNI 9300	Level ≥ 4

Requirements	Standard	>3mm ≤4mm	>4mm ≤6mm	>6mm ≤9mm	>9mm ≤12mm	>12mm ≤19mm	>19mm ≤30mm	>30mm
Elasticity modulus N/mm ²	EN 310	> 3000	> 2700	> 2700	> 2500	> 2200	> 2100	> 1900
Internal bonding N/mm ²	EN 319	≥ 0,65	≥ 0,65	≥ 0,65	≥ 0,60	≥ 0,55	≥ 0,55	≥ 0,50
Bending strength N/mm ²	EN 310	≥ 23	≥ 23	≥ 23	≥ 22	≥ 20	≥ 18	≥ 15
Swelling 24 h	EN 317	≤ 35 %	≤ 30 %	≤ 17 %	≤ 15 %	≤ 12 %	≤ 10 %	≤ 8 %

MDF board technical characteristics

Composition	Wood	Broad-leaved and coniferous wood fibres, 78 - 88%
	Adhesive	Urea – formaldehyde glue, 7 - 9%
	Additives	Water, 5 - 13% - Ammonium sulfate, 0.2% - Paraffin Traces
Density	EN 323	700-800 Kg/m ³
Moisture content	EN 322	4 - 11%
Sand content	EN 3340	< 0.05 %
Formaldehyde content	EN 120	Group E1 <8mg/100g
	ASTM E1333-96	Group EPF-S (>8mm) <5mg/100g
Dimensional tolerances	Thickness vs. nominal value	≤15mm +/-0.2mm ≥15mm +/-0.3mm
	Thickness within the panel	EN 14323 +/-0.3mm
	Length and width	+/-5mm
Planarity (both sides melamine faced ≥ 15mm)	EN 14323	≤ 2mm/m
Surface defects	EN 14323	Spots: ≤2 mm ² /m ² Length: ≤20 mm/m ²

ON REQUEST:

- Fire resistant melamine faced mdf board - B-s2, d0 EN 13986 EN13501-1
- FSC certified melamine faced mdf board - FSC mix 75% ICILA-COC-000343

STORAGE AND HANDLING

Goods must be stored in a dry and ventilated place (relative air humidity 35%-65%). Do not store with inflammable substances. If exposed to direct sunlight, the laminate may deteriorate. Stacks should be stored correctly, at a manageable height to ensure stability. To avoid warping or damp stains, place the panels on pallets with adequate spaces. When handling the laminates, use suction pads or gloves. Machinery and equipment must be fitted with suitable aspiration systems.

CLEANING & MAINTENANCE

The melamine surfaces are the most resistant among those used in the furniture field. For cleaning, it is preferable to choose a detergent for domestic use. It is recommended that you avoid spraying products directly onto the surface, as this may leave stains and marks; instead, it is preferable to apply the detergent product on a soft damp cloth, clean the surface and then rinse it. Avoid using abrasive products, bleach or highly chlorinated products or acids.

technical data sheet

- Chipboard E1 Carb 2 fire resistance
- Chipboard E1 Carb 2 standard

European norm EN 1350-1			French class NFP 92-501	German class DIN 4102	British class BS 476 Pts. 6 & 7	Italian class	USA class NFPA	Australian Asian class	Flammability	
fire behavior	smoke development	inflamed parts								
A1			M0	A1	Class 0				incombustible	
A2	S1	d0								incombustible
A2	S1	d1	M1	A2			Class A	Class A	not flammable	
A2	S2	d0								
A2	S3	d1								
B	S1	d0					Class 1			Class B
B	S1	d1	M2	B1			Class B			
B	S3	d1								
C	S1	d0					Class 2		Class C	hardly flammable
C	S2	d1		Class 1						
C	S3		M3						average flammable	
D	S1	d0			Class 2					
D	S2	d0	M4	B2		Class 3	Class D	Class D	easily flammable	
D	S2	d1								
D	S3	d2			Class 3					
E							Class K	Class F	highly flammable	
F				B3						

The continuous laminate CPL VGS (Vertical Grade Standard as defined by Standard EN 438) is a highly resistant decorative coating, recommended for vertical use. It is produced in rolls and made of a decorative paper, impregnated with melamine resin. It is supported by vegetable parchment and characterized by high flexibility; it varies according to the technical requirements and thickness. It can be further cut in rolls of width from 12 mm for the production of edges.

technical characteristics

Size for surfaces: Rolls of 1300mm Size for edges: Rolls from 12mm Thickness: From 0.20 to 0.40mm +/-0.10mm
 Finish: Matt, semi matt or gloss Texture: Flat or textured

Resistance to abrasion	EN 438/2-10	≥ Level 2
Resistance to water steam	EN 438/2-14	≥ Level 4
Resistance to dry heat 180°C	EN 438/2-16	≥ Level 4
Resistance to scratches	EN 438/2-25	≥ Level 2
Resistance to stains	EN 438/2-26	Groups 1 and 2 =5; Group 3 ≥ 4
Resistance to light	EN 438/2-27	≥ 6 blue wool scale
Formability (method A)	EN 438/2-32	≥ Radius 2mm
Resistance to blistering	EN 438/2-34	≥ 15"
Formaldehyde emission	EN 717-2	≤ 3,5 mg/hm ²

ON REQUEST: CHPL FSC CERTIFIED / FSC CW ICILA-CW-000343

STORAGE AND HANDLING

Goods must be stored in a dry and ventilated place (relative air humidity 35%-65%). Do not store with inflammable substances. If exposed to direct sunlight, the laminate may deteriorate. Stacks should be stored correctly, at a manageable height to ensure stability. When handling the laminates, use suction pads or gloves. Machinery and equipment must be fitted with suitable aspiration systems.

CLEANING & MAINTENANCE

The melamine surfaces are the most resistant among those used in the furniture field. For cleaning, it is preferable to choose a detergent for domestic use. It is recommended that you avoid spraying products directly onto the surface, as this may leave stains and marks; instead, it is preferable to apply the detergent product on a soft damp cloth, clean the surface and then rinse it. Avoid using abrasive products, bleach or highly chlorinated products or acids.

CHPL LAMINATES

CHPL laminates are produced in sheets and made of a decorative paper, impregnated with melamine resin. It has plastic properties and it is supported by kraft paper, impregnated with special thermosetting resins. CHPL laminates are available in the following types (specifications in accordance with Standard EN 438-1):

VGS (Vertical Grade Standard) recommended for vertical use. Standard thickness: 0,8 mm.

VGP (Vertical Grade Postforming) recommended for vertical use. Standard thickness: 0,6 mm.

HGS (Horizontal Grade Standard) recommended for horizontal use. Standard thickness: 0,8 mm.

HGP (Horizontal Grade Postforming) recommended for horizontal use. Standard thickness: 0,6 mm.

technical characteristics

Width: 1310mm; Length: from 2440 to 5600mm Finish: Matt, semi matt or gloss Texture: Flat or textured

		VGS 0.80mm +/-0.10mm	VGP 0.60mm +/-0.10mm	HGS 0.80mm +/-0.10mm	HGP 0.60mm +/-0.10mm
Resistance to abrasion	EN 438/2-10	≥ Level 2 IP _{≥50} WP _{≥150}	≥ Level 2 IP _{≥50} WP _{≥150}	≥ Level 3 IP _{≥50} WP _{≥350}	≥ Level 3 IP _{≥50} WP _{≥350}
Resistance to water steam	EN 438/2-14	≥ Level 4	≥ Level 4	≥ Level 4	≥ Level 4
Resistance to dry heat	EN 438/2-16	≥ Level 4	≥ Level 4	≥ Level 4	≥ Level 4
Resistance to scratches	EN 438/2-25	≥ Level 3 ≥ 4N	≥ Level 3 ≥ 4N	≥ Level 3 ≥ 4N	≥ Level 3 ≥ 4N
Resistance to stains	EN 438/2-26	Groups 1,2 =5 Group 3 ≥4	Groups 1,2 =5 Group 3 ≥4	Groups 1,2 =5 Group 3 ≥4	Groups 1,2 =5 Group 3 ≥4
Resistance to light	EN 438/2-27	≥ 6 blue wool scale	≥ 6 blue wool scale	≥ 6 blue wool scale	≥ 6 blue wool scale
Formability method A	EN 438/2-32	-	R ≤ 10 x nominal thickness	-	R ≤ 10 x nominal thickness
Resistance to blistering	EN 438/2-34	≥ 15"	≥ 15"	≥ 15"	≥ 15"
Formaldehyde emission	EN 717-2	≤ 3,5 mg/hm ²	≤ 3,5 mg/hm ²	≤ 3,5 mg/hm ²	≤ 3,5 mg/hm ²

ON REQUEST: CHPL FSC CERTIFIED / FSC CW ICILA-CW-000343

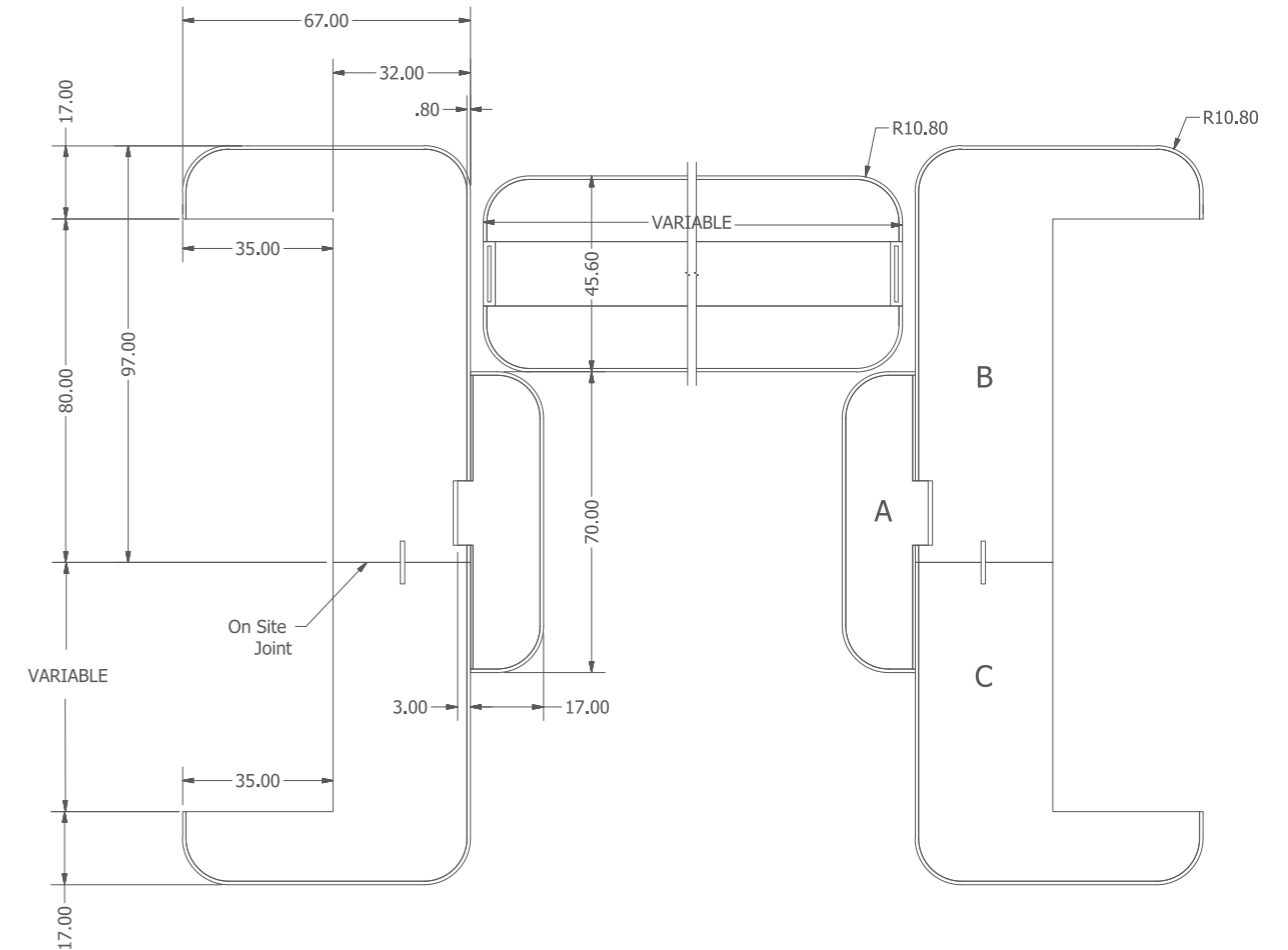
STORAGE AND HANDLING

Goods must be stored in a dry and ventilated place (relative air humidity 35%-65%). Do not store with inflammable substances. If exposed to direct sunlight, the laminate may deteriorate. Stacks should be stored correctly, at a manageable height to ensure stability. To avoid warping or damp stains, place the panels on pallets with adequate spaces. When handling the laminates, use suction pads or gloves. Machinery and equipment must be fitted with suitable aspiration systems.

CLEANING & MAINTENANCE

The melamine surfaces are the most resistant among those used in the furniture field. For cleaning, it is preferable to choose a detergent for domestic use. It is recommended that you avoid spraying products directly onto the surface, as this may leave stains and marks; instead, it is preferable to apply the detergent product on a soft damp cloth, clean the surface and then rinse it. Avoid using abrasive products, bleach or highly chlorinated products or acids.

TYPICAL HPL DOOR & FRAME DETAIL



Q Mark FD30 HPL wrapped door and frame

Door - 44mm Door with 0.8mm HPL - 45.6mm Overall

Frame

Part A - Door stop - MDF, 0.8mm HPL, 0.6mm Balancer

Part B - Fixed size radius frame detail - MDF, 0.8mm HPL

Part C - Variable size radius frame detail - MDF, 0.8mm HPL

FUSION

Research, innovation and technology are the distinctive features of the new FUSION line of products, deriving from the commitment and passion of Cleaf Research Lab.

FUSION results from the incorporation of textiles and threads into panels and laminated surfaces through state of the art technology. This new range of products provides the world of interior design with highly innovative solutions, both in terms of aesthetics and functionality.

FUSION is based on creativity: new surfaces with a versatile, original and eclectic character, converting the latest trends into a surprising collection of textures and palettes, offering a whole new range of exquisite solutions. The line was entirely created and developed with Italian expertise: the use of high-profile techniques and exclusive processing result in top quality and creativity, reflecting Cleaf's commitment to innovation.

FUSION is available in five versions:

HYPERTEX R2

Thickness: 0.15mm.

The 23g/m² TNT support makes the product ideal for MDF or aluminium profiles wrapping.

HYPERTEX R3

Thickness: 0.20mm

Supported by parchment of 70gr/m². This product is ideal for wrapping profile and frames with multiple curves and very sharp radiuses, as well as in cases where defects of support (such as matching of MDF + pine) request a product with a higher covering ability.

CHPLFUSION

Thickness: 0.6mm

Produced by pressing with phenolic kraft papers, ideal for further wrapping of panels.

ABILAM

Thickness: 4mm

FUSION surfaces are glued onto ABS support with polyurethane adhesive. The obtained product is rigid, light and high-resistant to humidity.

TSS - PANNELLO

Thickness: from 12 to 50mm.

With chipboard and MDF, the FUSION surfaces offer the possibility to produce many different components for furniture or interior design.

technical characteristics

Resistance to abrasion	EN 14323	IP <50 rev WP<150 rev
Resistance to light	EN 15187	> 6 blue wool scale
Resistance to stains	EN 12720	Class B (UNI 10944)

STORAGE AND HANDLING

Goods must be stored in a dry and ventilated place (relative air humidity 35%-65%). Do not store with inflammable substances. If exposed to direct sunlight, the laminate may deteriorate. Stacks should be stored correctly, at a manageable height to ensure stability. When handling the laminates, use suction pads or gloves. Machinery and equipment must be fitted with suitable aspiration systems.

CLEANING & MAINTENANCE

The FUSION line was created with a combination of threads and fabrics, embedded in surfaces. It is successfully used in the world of interior design in order to provide solutions with a strong aesthetic and functional character. The resin partially saturates the fabric protecting the fibres; although on the one hand, the thread on the surface offers an aesthetic effect and a unique texture to the product, on the other hand, it limits the resistance to staining agents. If the Fusion surface comes in contact with dirt, oil or contaminants, it is recommended to immediately remove it, by blotting the stain with a cloth soaked in water. Always avoid the use of abrasives or solvents. In case of persistent or dry stains, see the table below:

Fruit juice, marmalade, syrup, milk, tea, coffee, liqueurs, wine, soap, ink. - Cold water.

Fats, sauces, dry blood stains, wine and liqueurs, eggs. - Cold water and detergent for domestic use.

Jelly, carbon black, PVA, watercolours, organic waste. - Hot water and detergent for domestic use.

Observe the cleaning result after the moisture has evaporated. The wet fabric surface always becomes darker, but as the fibre dries, it returns to its initial colour. If spots or stains persist after cleaning, use a domestic stain remover. To test the reaction of the product to the stain remover, you may try it on a less visible area.

HYPERFLEX

Hyperflex is an ultra-thin decorative laminate with a thickness of 0,1mm. Thanks to its excellent flexibility, it is the deal product for coating profiles, skirting boards and the top of wardrobes. It is not necessary to apply further coating since the high-resistance properties of the product are already sufficient in order to protect its surface. It is available in three versions:

HYPERFLEX R1

Thickness 0,10mm, single layer.

HYPERFLEX R2

Thickness 0,15mm. Thanks to the 23g/m² TNT support, the product is ideal for coating moulded door panels and for any other application requesting a higher resistance compared to product R1.

HYPERFLEX R3

Thickness 0,20mm. Supported by parchment of 70gr/m². This product is ideal for wrapping profile and frames with multiple curves and very sharp radiuses, as well as in cases where defects of support (such as matching of MDF +pine) request a product with a higher covering ability.

technical characteristics

Size for surfaces: Rolls of 1300mm Thickness: Nominal thickness +/-0.05mm Finish: Matt, semi matt or gloss
Texture: Flat or textured

Resistance to abrasion	UNI 9115	Level \geq 4
Tendency to retain dirt	UNI 9300	Level \geq 4
Resistance to scratches	UNI 9428	Level \geq 3
Resistance to stains	EN 14323	Group 1 \geq 4; Group 2 \geq 3
Resistance to light	UNI 9427	\geq 5 grayscale
Formability (method A)	EN 438/2-32	Any radius
Formaldehyde emission	EN 717-2	\leq 3,5 mg/hm ²

ON REQUEST: CHPL FSC CERTIFIED / FSC CW ICILA-CW-000343

STORAGE AND HANDLING

Goods must be stored in a dry and ventilated place (relative air humidity 35%-65%). Do not store with inflammable substances. If exposed to direct sunlight, the laminate may deteriorate. Stacks should be stored correctly, at a manageable height to ensure stability. When handling the laminates, use suction pads or gloves. Machinery and equipment must be fitted with suitable aspiration systems.

CLEANING & MAINTENANCE

For cleaning, it is preferable to choose a detergent for domestic use. It is recommended that you avoid spraying products directly onto the surface, as this may leave stains and marks; instead, it is preferable to apply the detergent product on a soft damp cloth, clean the surface and then rinse it. Avoid using abrasive products, bleach or highly chlorinated products or acids.

KRISTALL PANELS

The Kristall Panels are made of P2 particle boards, laminated in both sides with ABS-PMMA sheet. The lamination polyurethane glue enables an excellent performance in terms of adhesion, temperature and humidity resistance. A thick acrylic surface guarantees excellent aesthetic characteristics, as well as high resistance to scratches, compared to a lacquered panel, and high resistance to light and stains. All panels feature a protection film on both

technical characteristics

Size: 2790 x 1300 mm Standard thickness: 20 and 23 mm +/-0.2mm Back side: Same as on the front side
Gloss 60°: \geq 85

Resistance to scratches	EN 14323	\geq 0.4N
Resistance to stains	EN 14323	Groups 1 e 2 \geq 4
Resistance to light	EN 15187	\geq 6 blue wool scale
Formaldehyde emission		In accordance with standard CARB 2
Colour tolerances		From \leq 0.8

ON REQUEST: FSC CERTIFIED MELAMINE FACED PARTICLE BOARD - FSC mix 75% ICILA-COC-000343

STORAGE AND HANDLING

Goods must be stored in a dry and ventilated place (relative air humidity 35%-65%). Do not store with inflammable substances. If exposed to direct sunlight, the panel may deteriorate. Stacks should be stored correctly, at a manageable height to ensure stability. To avoid warping or damp stains, place the panels on pallets with adequate spaces. When handling the laminates, use suction pads or gloves. Machinery and equipment must be fitted with suitable aspiration systems. During machining, cutting, edging, drilling etc., you must ensure that the area is clean in order to prevent impurities from entering into the panels, and prevent from damages that may be caused to the surface during stacking.

CLEANING & MAINTENANCE

Remove the protective film only after the final installation of the product. Immediately after film removal, it is advisable to clean the surface with a soft damp cloth, water and neutral soap. This enables a significant enhancement of the final hardness of the surface. Avoid the use of cleaning sponges and/or abrasive products. Instead, use a soft cloth, neutral soap and water. Small scratches can be removed with polish, suitable for acrylic surfaces.

DOOR EDGE

The Door Edge is a decorative coating consisting of a special paperboard, single-coloured or printed, impregnated and lacquered. To ensure excellent adhesion with any type of glue, the material is provided with a sanded back. No further lacquering is needed as its good properties are already sufficient to protect the surface of the product.

technical characteristics

Thickness: 0.25 +/-0.05mm Finish: Matt, semi matt or gloss Texture: Flat or textured

RESISTANCE TO ABRASION	EN 14322	Class 1
CROSS-CUTTING	ISO 2409	≤ 1
RESISTANCE TO SCRATCHES	UNI 9428	≥ 0,8N
RESISTANCE TO STAINS	UNI 10944	Class E
RESISTANCE TO LIGHT	UNI 9427	≥ 5 grayscale
FORMABILITY (method A)	EN 438/2-32	Any radius
FORMALDEHYDE EMISSION	EN 717-2	≤ 3,5 mg/hm ²

ON REQUEST: Door Edge FSC certified - FSC CW ICILA-CW-000343

STORAGE AND HANDLING

Goods must be stored in a dry and ventilated place (relative air humidity 35%-65%). Do not store with inflammable substances. If exposed to direct sunlight, the laminate may deteriorate. Stacks should be stored correctly, at a manageable height to ensure stability. When handling the laminates, use suction pads or gloves. Machinery and equipment must be fitted with suitable aspiration systems.

CLEANING & MAINTENANCE

For cleaning, it is preferable to choose a detergent for domestic use. It is recommended that you avoid spraying products directly onto the surface, as this may leave stains and marks; instead, it is preferable to apply the detergent product on a soft damp cloth, clean the surface and then rinse it. Avoid using abrasive products, bleach or highly chlorinated products or acids.

MELAMINE TSS SURFACES CLEANING INSTRUCTIONS

The melamine surfaces are the most resistant among those used in the furniture field. In case of persistent or dry stains, it is recommended to use water, soapy water or ethylic alcohol and acetone according to the following table:

	Cold Water	Cold water and detergent for domestic use	Hot water and detergent for domestic use	Alcohol 50%	Acetone
Fruit juice, marmalade, syrup, milk, tea, coffee, liqueurs, wine, soap, ink	*				
Fats, sauces, dry blood stains, wine and liqueurs, eggs		*			
Jelly, carbon black, vinyl glue, watercolours, organic waste			*		
Vegetable oil, pens, magic markers, foundation make-up, hair spray				*	*
Nail polish, linseed oil					*

Smooth or slightly embossed surfaces

It is recommended that you avoid spraying products directly onto the surface, as this may leave stains and marks; instead, it is preferable to apply the detergent product on a soft damp cloth, clean the surface and then rinse it. Avoid using abrasive products, bleach or highly chlorinated products or acids.

Deeply embossed surfaces

Clean with a soft cloth using the aforementioned solvents, as per the above table. In case of deep surfaces (such as Matrix, Orion, Nadir...) and very light colours, the aforementioned cleaning procedure may be inadequate or insufficient in order to remove the dirt from the furrows of the deep surfaces. In this case, it is recommended to delicately clean that area, by using a melamine magic sponge: wet the sponge with tepid water and squeeze it. Avoid using abrasive sponges, as they may damage the surface.

Upon request, a cleaning kit including a mild detergent and a magic sponge may be sent by CLEAF to the interested customers.

surface characteristics

COMPOSITION - INFORMATION ON INGREDIENTS

Cellulose supports impregnated with phenolic and amino-resins and pressed with a thermosetting cycle with high pressure and temperature. No hazardous component according CEE 67/548.

HAZARDS IDENTIFICATION

No hazard for humans or the environment.

FIRST AID MEASURES

Nothing to report

FIRE FIGHTING MEASURES

Means of extinction: CO2, foam, powder.

ACCIDENTAL SPILL - RELEASE MEASURES

Not applicable.

HANDLING AND STORAGE

Storage of the product at room temperature and in well ventilated area.-

EXPOSURE CONTROLS - PERSONAL PROTECTION

Nothing to report

PHYSICAL AND CHEMICAL PROPERTIES

- Specific weight: 1,4 kg/m²
- Calorific value: 4.500 cal/g
- Thickness from: 0.6 to 1.2 mm

STABILITY AND REACTIVITY

- Stability: the product is stable in normal storage conditions
- Conditions to avoid: high temperatures, exposure to direct sunlight

TOXICOLOGICAL INFORMATION

Not expected to be harmful. Decomposition products are irritant for eyes and mucous membranes.

ECOLOGICAL INFORMATION

Do not release into the environment.

DISPOSAL CONSIDERATIONS

Disposal of wastes and used containers must be in accordance with applicable federal, state and local regulations.

TRANSPORT INFORMATION

This product is not recommended for transportation.

REGULATORY INFORMATION

Not to be labeled.
No safety symbols.

OTHER INFORMATION

Verify the product will be correctly used in all its applications.
Main application: decorative surface for furniture.

surface characteristics

COMPOSITION / INFORMATION ON INGREDIENTS

Panel: Wood 78-88% urea-formaldehyde condensation adhesive 7-9%, water 7-13%, ammonium sulfate 0.2%, paraffin tracks. Cellulose-based decorative paper impregnated with melamine formaldehyde resins. Formaldehyde (CAS No. 50-00-0) Total extractable <0.008%, Class E1.

HAZARD IDENTIFICATION

The product is not dangerous by inhalation, contact with skin or if swallowed.

FIRST AID MEASURES

Nothing to be informed

FIRE FIGHTING MEASURES

Extinguishing media: foam, dry chemical, CO₂.
Exposure to particular risks: possible toxic vapor of formaldehyde.
Protective Equipment: indoors wear suitable breathing equipment.
Special precautions: None

ACCIDENTAL RELEASE MEASURES

Not applicable

HANDLING AND STORAGE

The material should be stored in sunny and dry area.

EXPOSURE CONTROL/PERSONAL PROTECTION

- During working out of the panel:
- Exposure check (application D.leg. No. 66/99)
 - Breath protection
 - Eye protection
 - Skin protection

PHYSICAL AND CHEMICAL PROPERTIES

Appearance solid goods
Weight 500 - 700 kg/m³
Dust ignition temperature 100°C

STABILITY AND REACTIVITY

Thermal decomposition may produce toxic gas including CO, aldehydes and organic acids. Avoid oxidizing agents and keep away from ignition sources

TOXICOLOGICAL INFORMATION

No data are available on this product.

ECOLOGICAL INFORMATION

Don't throw away the product in the environment

DISPOSAL CONSIDERATIONS

Disposal should be done in an approved area in compliance with applicable laws.
Do not dump. EU Waste class: 170201/030105.

TRANSPORT INFORMATION

Road (ADR): NOT DANGEROUS
Railway (RID): NOT DANGEROUS
Sea (IMO): NOT DANGEROUS
Air (ICAO/IATA): NOT DANGEROUS

REGULATORY INFORMATION

Rules on classification, packaging and labeling
91/155/CEE 67/548/CEE DM/10/12/1\898 DM/28/01/1009

OTHER INFORMATION

This MSDS has been prepared according to our information and refer only to the product concerned. The Company assumes no liability for personal injury or property damage resulting from improper use of the contents of this tab. The user must verify the suitability and completeness of information regarding specific use



XYLOHOUSE SHOWROOM



XYLOHOUSE
The Business Design Centre,
Suite 304,
Islington Green,
52 Upper Street Islington,
London N1 0QH
T: +44(0) 20 8368 8122
F: +44(0) 20 83688127
info@xyloleaf.com
www.xyloleaf.com

FSC CERTIFICATION



The mark of
responsible forestry

XyloCleaf and its commitment to the environment

Due to the considerable volumes of lumber consumed during the manufacture of our products, we bear a huge responsibility to our clients in ensuring the sustainability of our raw materials. XyloCleaf are proud to hold FSC® Certification which in turn allows us to offer Forest Stewardship Council® certified products for specified projects. By working closely with our factories we ensure that all our products are produced using sustainable resources. Where required FSC Certified products can be provided for larger projects if so specified. Please refer to our sales office for further information.

POINTS OF SALES MATERIAL



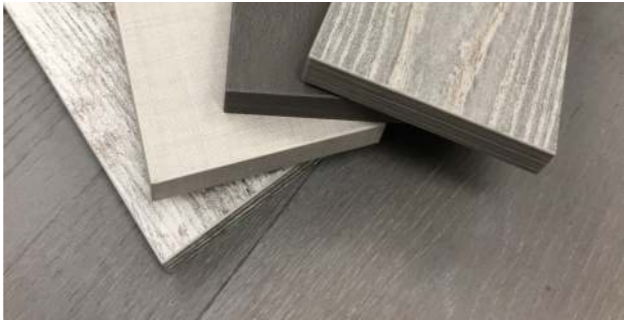
Panels sample swatch



HPL sample swatches 1&2



Mitre joint 10x10x10cm sample



1/2 A4 vertical panels sample with ABS edge



Complete set of 1/2 A4 samples in presentation suitcases



[contact details](#)

XYLOHOUSE, The Business Design Centre - Suite 304, Islington Green, 52 Upper Street, Islington, London N1 0QH
T +44(0) 20 8368 8122 F +44(0) 20 8368 8127 info@xyloleaf.com www.xyloleaf.com

Art Directing and Supervision
Catalogue Design and Editing
Photography
Text translated and edited
Graphics

Design Research Office / Valis Loizides
Design Research Office / Valis Loizides
Vassos Stylianos
CLEAF Italy
Diamanto Stylianos
Christos Georgiou

First Edition 2013
Revised Second Edition 2014
Revised Third Edition 2016
Revised Fourth Edition 2017
Revised Fifth Edition 2018