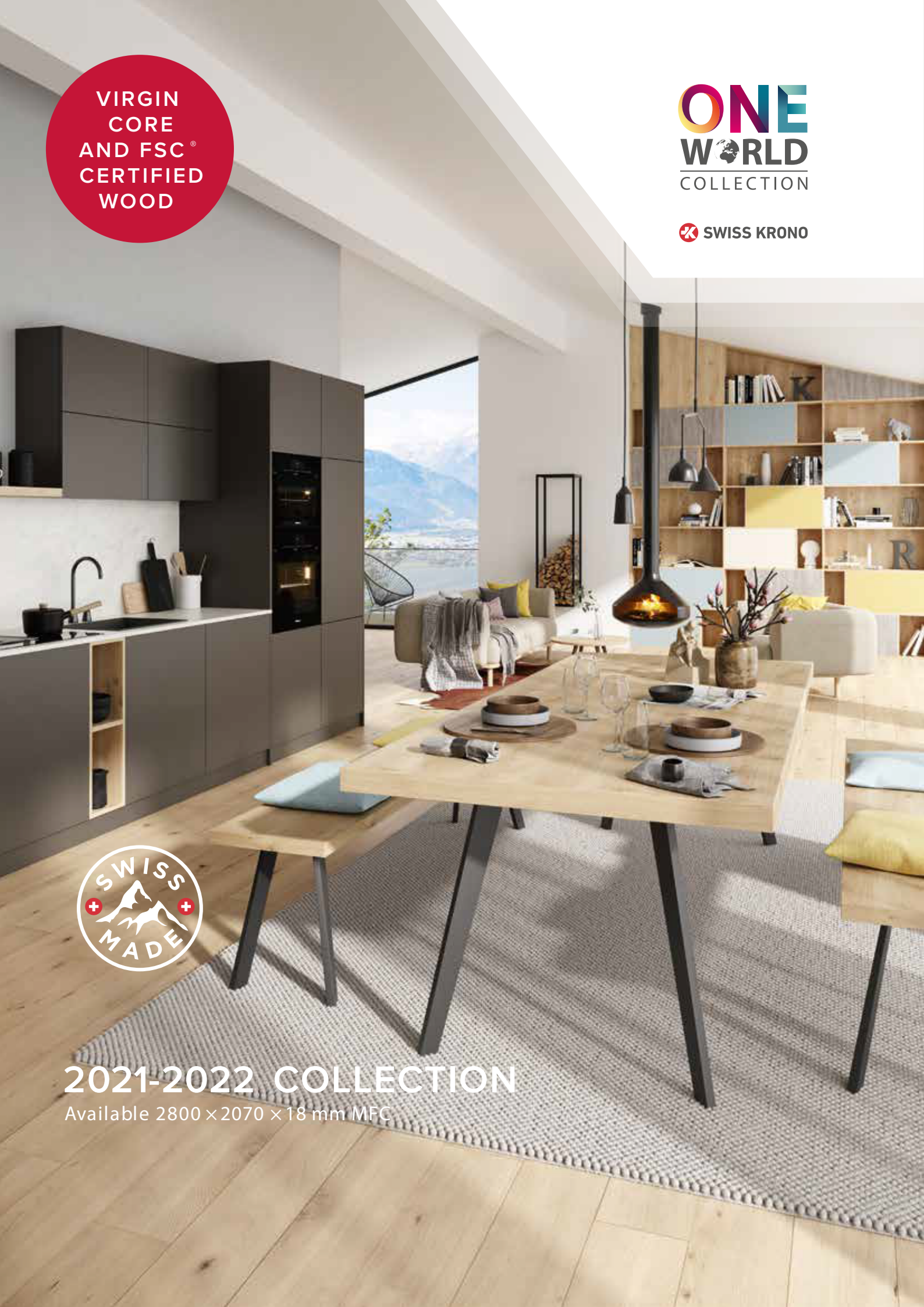


VIRGIN
CORE
AND FSC®
CERTIFIED
WOOD

ONE
WORLD
COLLECTION

SWISS KRONO

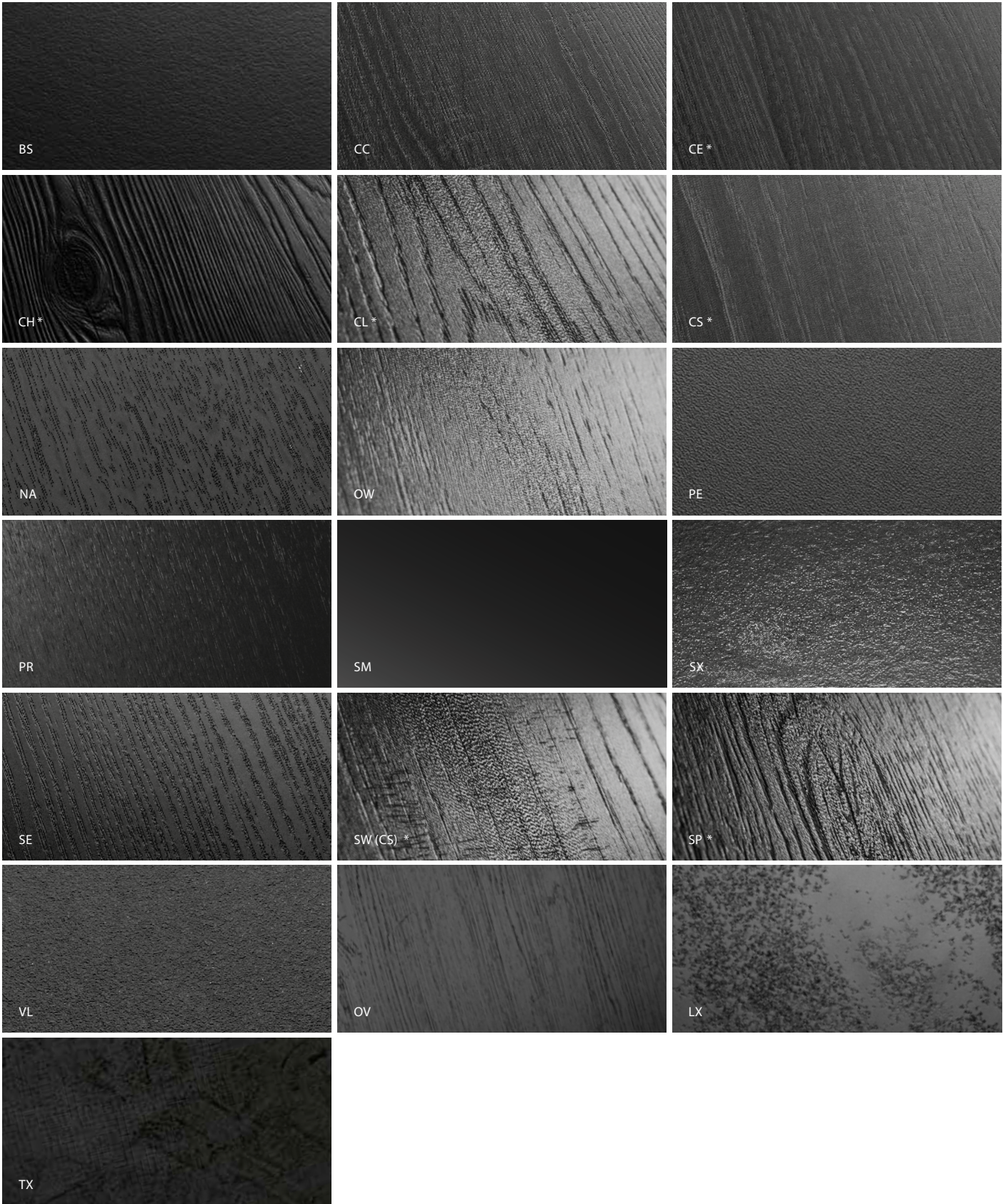


2021-2022 COLLECTION

Available 2800 x 2070 x 18 mm MFC

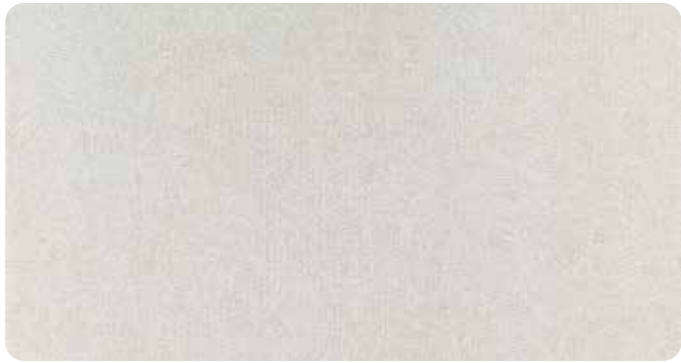
Textures

* Synchronised surface textures





D4214 TX
White



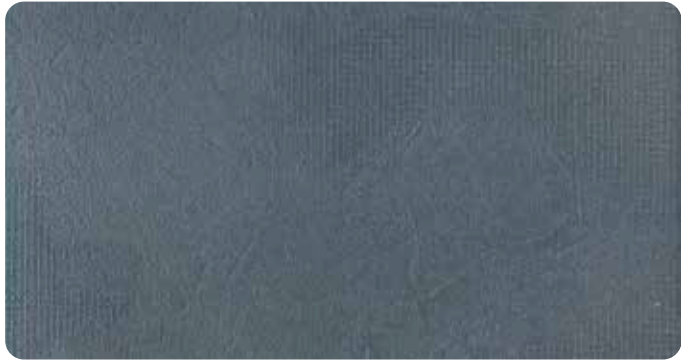
D4215 TX
Beige



D4218 TX
Grey



D4216 TX
Green



D4217 TX
Blue



D4213 TX
Bronze



D4212 TX
Mercury



D4208 TX
Jupiter



D4209 TX
Uranus



D4210 TX
Saturn



D4211 TX
Pluto



U190 TX
Black



D4415 OV
Craft Oak Vanilla



D4416 OV
Craft Oak Anthracite



D1309 VL
Metallic Aluminium



D4452 VL
Metallic Fine



D4454 VL
Smoked Metallic



D4453 VL
Metallic Carbon



D4448 LX
Marmor Rome



D1274 SX
Concrete Stromboli



D4450 LX
Lavante



D2831 SX
Natural Concrete



D4109 SX
Woodcon Concrete



D2830 SX
Anthracite Concrete



D4826 SX
Vesuv Concrete



D4442 LX
Marmor Grafite



D4444 LX
Moon



D4443 LX
Marmor Bronze



D4447 LX
Stenar Rusty



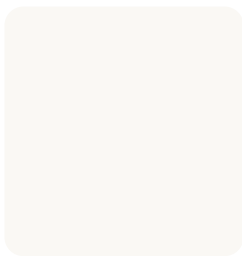
D3274 LX
Beton Grey



U2505 PE
Soft Ice



U4372 VL
Moon White



P213 SM
Painting Grade



U570 CH
Porcelain



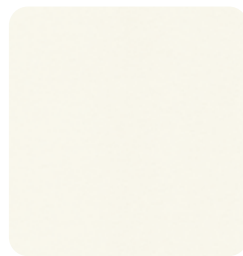
U106 PE
Pearl White



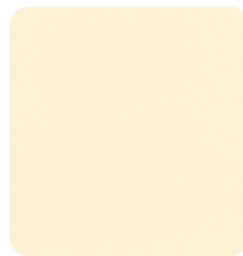
K101 SE
White Ash



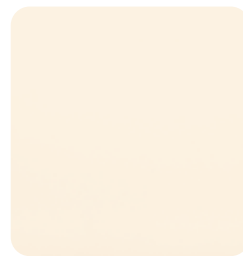
K101 SM
White



K101 PE
White



U514 PE
Ivory



U3261 VL
Crème



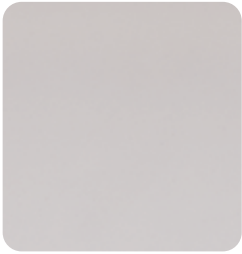
U119 PE
Light Beige



U544 VL
FieldGrey



U112 PE
Grey



U540 VL
Stone Grey



U3057 VL
Lava Grey



U3062 VL
Praline



U171 PE
Dark Grey



U162 PE
Graphite



U164 PE
Anthracite



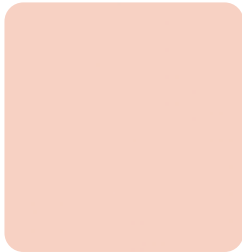
U166 VL
Basalt Grey



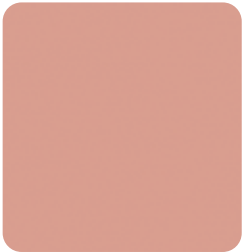
U190 PE
Black



U190 SE
Black Ash



U141 VL
Rose



U4446 VL
Ballet Slipper Pink



U3053 VL
Cappuccino



U4436 VL
Terracotta Red



U4437 VL
Red Wine



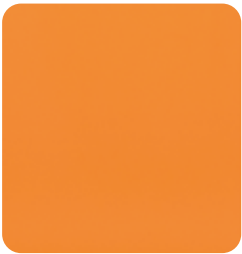
U7110 PE
Coral Red



U148 PE
Red



U2500 PE
Lipstick



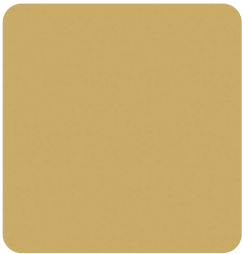
U2645 PE
Jaffa Orange



U136 PE
Orange



U3986 VL
Mustard



U4438 VL
Dijon Yellow



U4439 VL
Pistachio



U2644 PE
Saffron Yellow



U131 PE
Yellow



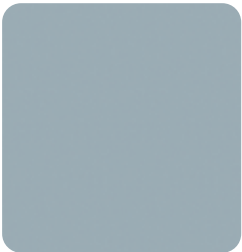
U4817 PE
Sky Blue



U3271 VL
Ice Blue



U159 PE
Turquoise



U4435 VL
Smoke Blue



U120 VL
Dove Blue



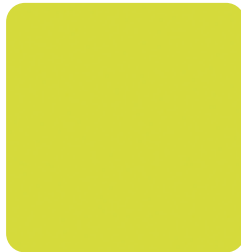
U125 PE
Atoll Blue



U4821 PE
Petrol



U3824 VL
Sea Blue



U2509 PE
Limette



U2504 PE
Lime



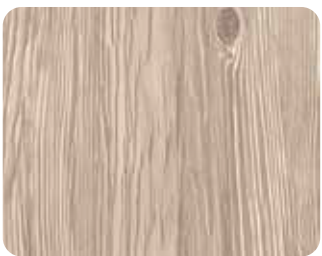
U2643 PE
Green Apple



U155 PE
Emerald



D3800 CL
Rome Oak



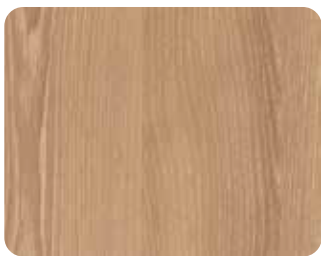
D4204 CH
Hickory Montana



D4099 CC
Chianti Oak Sand



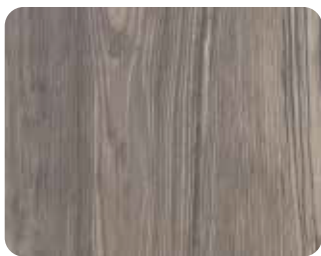
D3801 CL
Madrid Oak



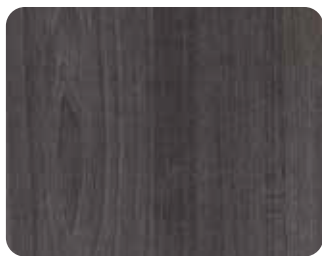
D2042 CE
Champagne Classic



D3798 CL
London Oak



D4205 CH
Hickory Oregon



D4103 CS
Swiss Elm Onyx



D2693 NA
Velvet Oak



D375 BS
Natural Maple



D375 PR
Natural Maple



D348 PR
Japanese Ash



D1783 PR
Mangfall Beech



D391 PR
Light Beech



D2217 PR
Stone Oak



D687 PR
Lugano Oak



D381 PR
Beech



D4418 OV
Rustic Chestnut Natural



D3316 SP
Helsinki Oak



D3818 OW
Lviv Marron



D2541 NA
Swiss Elm Cool



D3313 SP
St Petersburg Oak



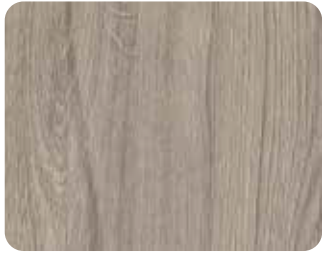
D4430 OV
White Oak



D4426 OV
White Ash



D4107 VL
Classic Ash Tebac



D3315 SP
Oslo Oak



D2506 NA
Swiss Elm Warm



D4432 OV
Natural Elm



D4428 OV
Oak Natural



D4225 OV
Artisan Oak Yellow



D3811 OW
Venice Walnut



D302 PR
Office Oak

Available from stock
2800 × 2070 × 18 mm MFC



D620 PR
Natural Alder



D3192 SW
Berlin Elm



D3823 OW
New York Oak



D4425 OV
Grey Ash



D2291 VL
Acacia Tobacco



D5291 VL
Riviera Oak



D4429 OV
Beige Grey Oak



D4427 OV
Smoked Ash



D4434 OV
Elm Grey



D3813 OW
Barcelona Walnut



D3822 OW
Dublin Oak



D4421 OV
Metalwood Carbon Grey



D3810 OW
Nice Walnut



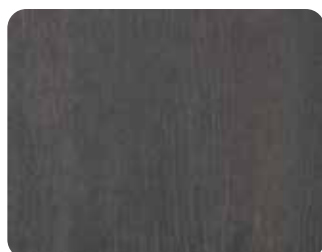
D4409 OV
Walnut Brown



D4420 OV
Rustic Chestnut Brown



D1378 BS
Wenge Ebony



D4423 OV
Metalwood Black

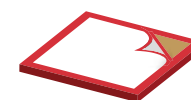
Alternative substrates

A choice of 128 décors, which can be combined with a variety of substrates, all with matching laminate and edging, see details below:

IDENTICAL SURFACE ON ALTERNATIVE SUBSTRATES Pre-Laminated and Melamine faced

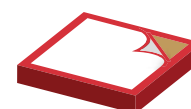
Particleboard

Size 2800 × 2070 mm
Thickness 6–40 mm



Medium density Fibreboard (MDF)

Size 2800 × 2070 mm
Thickness 6–40 mm



Moisture resistant Particleboard

Size 2800 × 2070 mm
Thickness 16, 18, 19, 22, 25, 30 mm



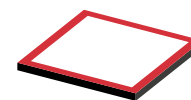
Fire retardant Particleboard and MDF

Size 2800 × 2070 mm
Thickness 16, 19, 25 mm



SWISS CDF

Size 2800 × 2070 mm
Thickness 6–19 mm



BE.YOND

Size 2800 × 2070 mm
Thickness 8, 16, 18, 19, 25 mm

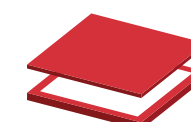


MATCHING LAMINATES AND EDGINGS

High Pressure Laminate (HPL)

Size 2600 × 2070 mm
Thickness 0.8 mm

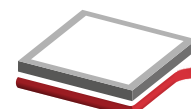
Jumbo sheets postforming Grade and other thickness and specifications on request.



ABS Edging

(100 m Rolls)

Size 1 × 23 mm × 100 m
Thickness 1 mm





SWISS KRONO GROUP

The tradition of the SWISS KRONO GROUP goes back to 1966 when the Austrian entrepreneur Ernst Kaindl founded the company in Menznau, Switzerland. Since then SWISS KRONO® has gone from strength to strength, we put our success down to our commitment to innovation and global expansion.

The owner's and employees' strong determination have given the company a top position in the wood-based material sector. The dynamic growth of SWISS KRONO GROUP allows for the development of new markets. Today the company's products are known in over 90 countries.

The combination of thoughtful investments and an experienced and ambitious team of employees guarantee the successful realisation of new ideas and dynamic growth in the future. The company employs 4,500 people, whose engagement and professionalism create products and services of the highest quality.



ENVIRONMENT

SWISS KRONO® products will impress you not only with their design and superior quality, but also with their excellent credentials. Our careful product planning, use of renewable energy sources and repeated use of wooden raw material, actively contribute to reducing CO₂.

Sustainable procurement of raw materials

The wood for our high-quality products comes exclusively from sustainably managed forests. Whenever possible we look for the relevant FSC® and PEFC™ sustainability certificates. "Swissness" is taken very seriously, as over 80% of our timber requirement comes from Switzerland.

Leader in ecological manufacturing

Throughout our entire supply chain we put the emphasis on energy-efficient manufacturing which makes the best use of resources. We are proud to take a leading role on an international level: By using over 90% renewable thermal energy, SWISS KRONO® products produce substantially less CO₂ emissions than comparable wood based products from within the EU. By buying our products you are making your personal contribution to environmental protection.



HOW PURE IS YOUR WOOD?

According to FSC® almost half of the people in the UK recognise the FSC® trademark logo design, and this increased awareness is contributing to the growth in the market of responsibly sourced timber and timber products.

SWISS KRONO® is a pioneer in sustainability and environmental protection. Setting it apart from other brands, the company is unique in producing the core board for its SWISS KRONO® One World Collection from virgin wood material.

The virgin wood is sourced from no further than a 350 km radius of the Swiss factory and meets and exceeds standard requirements from both FSC® and PEFC™. Bark and other surplus materials are totally recycled in the factory by burning them in a biomass unit to create electricity for the site. This leaves the wood free from any contaminants that may damage or shorten the life of machine tools, giving furniture manufacturers the benefit of exceptionally good machinability.

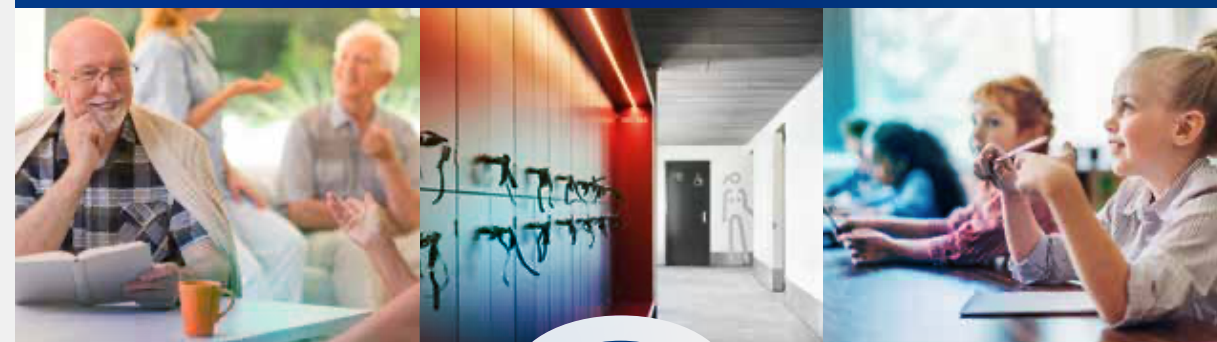
In the UK, the company has a 35 year distribution partnership with International Decorative Surfaces (IDS) who, with their 18 branches nationwide, provide extensive stockholding and rapid product availability to meet the demands of furniture manufacturers.

IDS hold 128 décors ex-stock which can be delivered to a customer's door in just 24–48 hours. Available exclusively from all IDS depots with no minimum order quantity. HPL and ABS edging matching the entire range is also available upon request.



BE.SAFE

The antimicrobial surface for all living spaces



[swisskrono.com/besafe](https://www.swisskrono.com/besafe)



ANTIVIRAL
ANTIBACTERIAL ANTIFUNGAL



- ✓ **Active triple protection** against viruses, bacteria and fungi
- ✓ **Effective 24/7** as the active agent is retained throughout the product's life cycle
- ✓ **Stress-free safety** thanks to the antimicrobial agent integrated into the product

BE.SAFE



Antiviral



Antibacterial



Antifungal